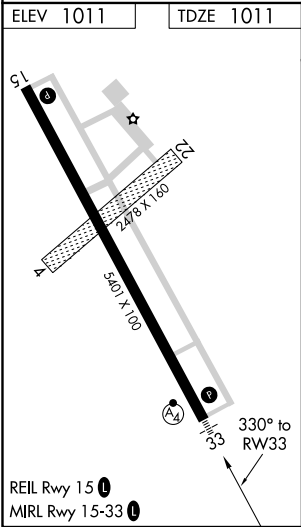
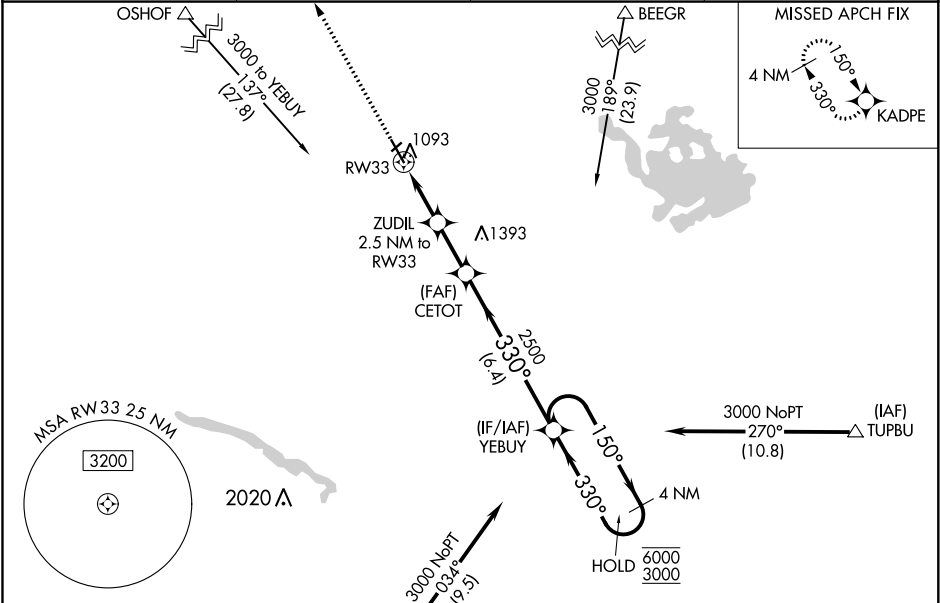




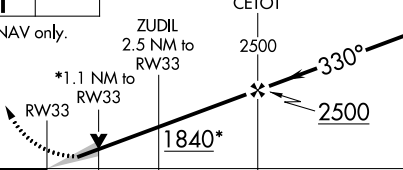

WAAS CH 56631 W33A	APP CRS 330°	Rwy Idg 5401 TDZE 1011 Apt Elev 1011
--	------------------------	---

RNAV (GPS) RWY 33
NEW ULM MUNI (ULM)

RNP APCH. Circling NA to Rwy 4 and 22. For uncompensated Baro-VNAV systems, LNAV/VNAV NA below -17°C or above 54°C. Inop table does not apply to LPV all Cats. For inop ALS, increase LNAV/VNAV all Cats visibility to ½ SM, LNAV Cat D to 1 ½ SM.	MALSF 	MISSED APPROACH: Climb to 3000 direct KADPE and hold.
---	-----------	---

AWOS-3 118.325	MINNEAPOLIS CENTER 127.1 290.2	GCO 121.725	UNICOM 122.8 (CTAF) 0
--------------------------	--	-----------------------	---------------------------------



(IAF) WAGIK 					
3000 ↑	KADPE 	VGSi and RNAV glidepath not coincident (VGSi Angle 3.00/TCH 50).		YEBUY 4 NM Holding Pattern	
*LNAV only.		ZUDIL 2.5 NM to RW33	CETOT 2500	150° → 6000 ← 330° 3000	
		1840*	2500	GP 3.00° TCH 40	
CATEGORY	A	B	C	D	
LPV DA	1211-¾ 200 (200-¾)				
LNAV/ VNAV DA	1312-¾ 301 (400-¾)				
LNAV MDA	1400-¾ 389 (400-¾)		1400-7/8 389 (400-7/8)		
 CIRCLING	1440-1 429 (500-1)	1500-1 489 (500-1)	1620-1¾ 609 (700-1¾)	1620-2 609 (700-2)	