

VOR/DME GFK 114.3 Chan 90	APP CRS 097°	Rwy Idg TDZE 896 Apt Elev 900	VOR/DME RWY 13 CROOKSTON MUNI-KIRKWOOD FIELD (CKN)
---	------------------------	---	--

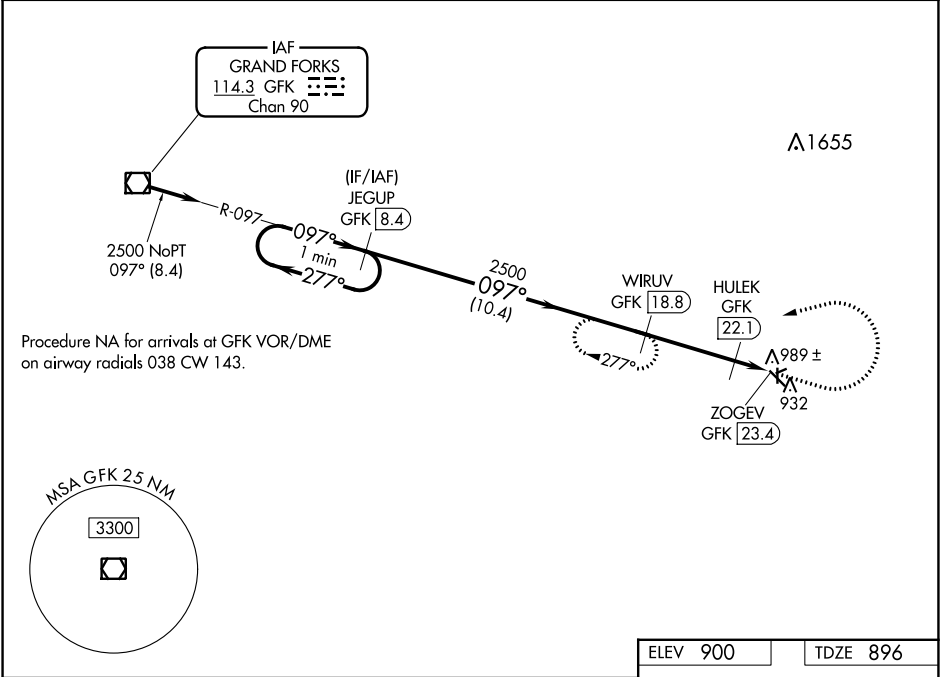
⚠

When local altimeter setting not received, use Grand Forks Intl altimeter setting. Circling Rwy 6, 24, 17, 35 NA at night.

MISSED APPROACH:

Climb to 2000 then climbing left turn to 2500 heading 250° and GFK VOR/DME R-097 to WIRUV/GFK 18.8 DME and hold.

AWOS-3 126.425	GRAND FORKS APP CON 118.1 318.1	CLNC DEL 118.15	UNICOM 122.7 (CTAF) 0
--------------------------	---	---------------------------	---------------------------------



VGSI and descent angles not coincident (VGSI Angle 3.00/TCH 30).			
<div>One Minute Holding Pattern</div> <div><div>2500</div><div>277°</div><div>097°</div><div>2500</div><div>097°</div><div>277°</div></div> <div>*1400 when using Grand Forks Intl altimeter setting.</div>			
<div>10.4 NM</div> <div>3.3 NM</div> <div>1.3 NM</div>			
CATEGORY	A	B	D
S-13	1240-1 344 (400-1)		NA
CIRCLING	1320-1 420 (500-1)	1360-1 460 (500-1)	1360-1½ 460 (500-1½)
GRAND FORKS INTL ALTIMETER MINIMUMS			
S-13	1320-1 424 (500-1)		1320-1¼ 424 (500-1¼)
CIRCLING	1400-1 500 (500-1)		1400-1½ 500 (500-1½)

