

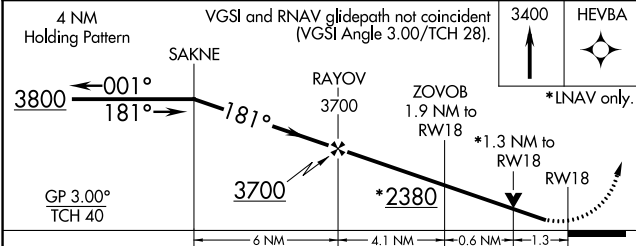
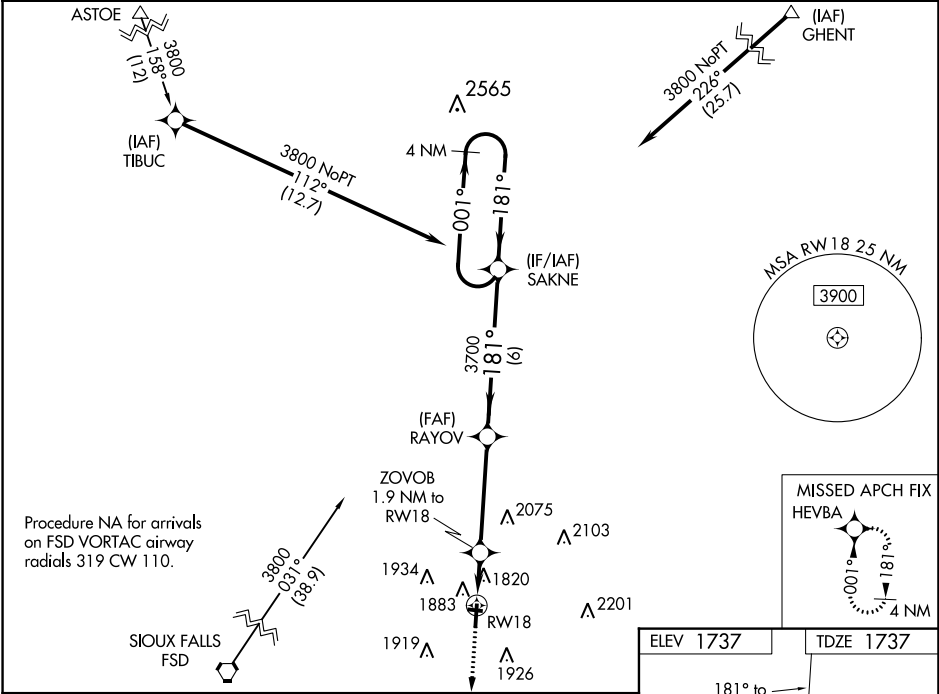
WAAS CH 40431 W18A	APP CRS 181°	Rwy Idg TDZE 1737 Apt Elev 1737	4306
--	------------------------	---	-------------

RNAV (GPS) RWY 18
PIPESTONE MUNI (PQN)

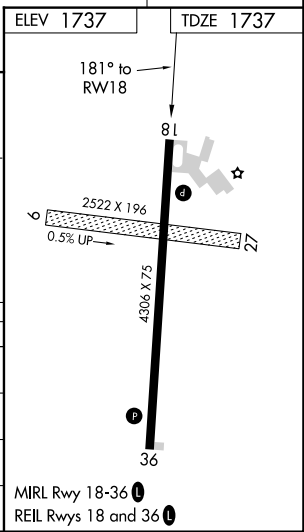
⚠ For uncompensated Baro-VNAV systems, LNAV/VNAV NA below -18°C (0°F) or above 54°C (130°F).
⚠ DME/DME RNP -0.3 NA. When local altimeter setting not received, use Slayton altimeter setting and increase all DA 68 feet and all MDA 80 feet; increase LPV all Cats, LNAV/VNAV all Cats, and Circling Cat C visibility ¼ mile; increase LNAV Cat C visibility ⅓ mile. Helicopter visibility reduction below ¾ SM NA. Baro-VNAV and VDP NA with Slayton altimeter setting. Circling NA to Rwy 9 and 27.

MISSED APPROACH:
Climb to 3400 direct HEVBA and hold.

AWOS-3 118.375	MINNEAPOLIS CENTER 132.05 317.4	GCO 121.725	UNICOM 122.8 (CTAF) 0
--------------------------	---	-----------------------	---------------------------------



CATEGORY	A	B	C	D
LPV DA	1987-1	250 (300-1)		NA
LNAV/VNAV DA	2034-1	297 (300-1)		NA
LNAV MDA	2180-1	443 (500-1)	2180-1 3/8 443 (500-1 3/8)	NA
CIRCLING	2200-1	463 (500-1)	2280-1 1/2 543 (600-1 1/2)	NA



NC-1, 31 DEC 2020 to 28 JAN 2021

NC-1, 31 DEC 2020 to 28 JAN 2021