

LOC I-MKT <b>108.7</b>	APP CRS <b>331°</b>	Rwy Idg TDZE Apt Elev	<b>6600</b> <b>1021</b> <b>1021</b>
---------------------------	------------------------	-----------------------------	---

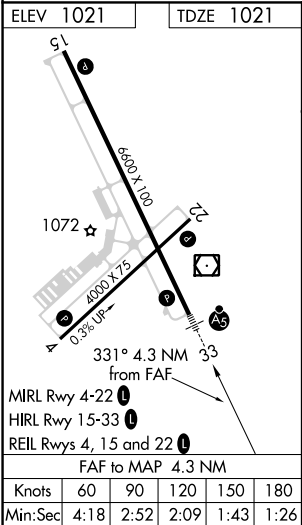
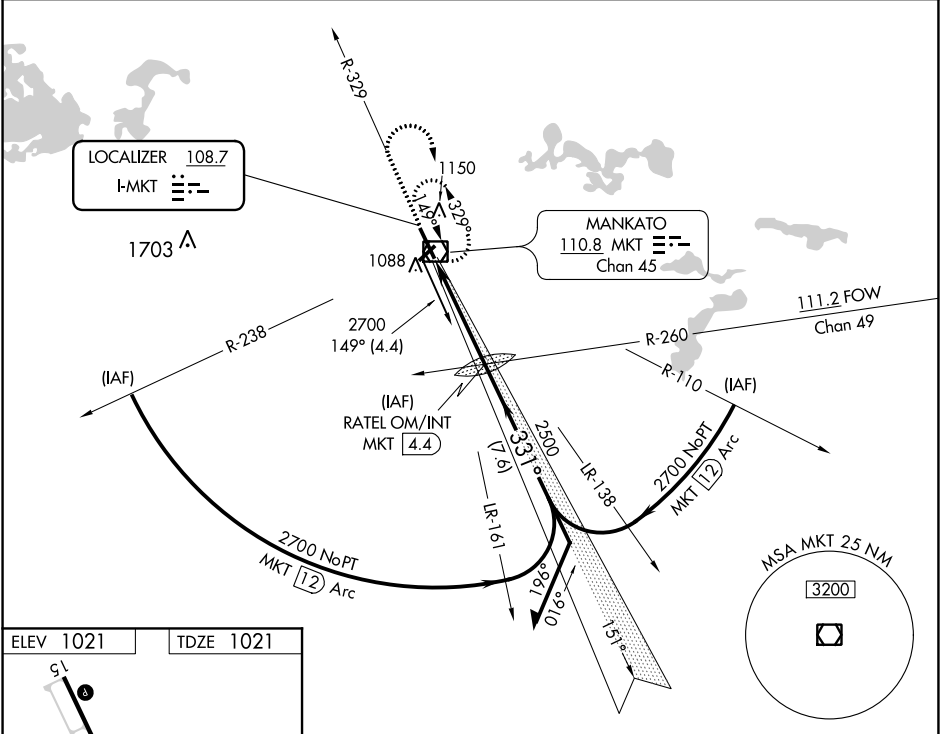
ILS or LOC RWY 33  
MANKATO RGNL (MKT)

**NA** For inop MALSR when using Waseca altimeter setting, increase S-ILS 33 all Cats visibility to 7/8 mile. When local altimeter setting not received, use Waseca altimeter setting: increase DA to 1278 feet; increase all MDA 60 feet and visibility Cats C and D 1/4 mile.

**MALSR**

**MISSED APPROACH:** Climb to 2000 then climbing right turn to 2700 direct MKT VOR/DME and hold.

AWOS-3PT <b>118.175</b>	MINNEAPOLIS CENTER <b>135.0 306.9</b>	UNICOM <b>122.725</b> (CTAF) <b>0</b>
----------------------------	--	--



2000	2700	MKT	RATEL OM/INT MKT [4.4]	Remain within 10 NM
VGSi and ILS glidepath not coincident (VGSi Angle 3.00/TCH 49).				
2441				
151°				
2700				
331°				
2500				
GS 3.00° TCH 45				
4.3 NM				
CATEGORY	A	B	C	D
S-ILS 33	1221-1/2 200 (200-1/2)			
S-LOC 33	1420-1/2 399 (400-1/2)		1420-5/8 399 (400-5/8)	
CIRCLING	1460-1 439 (500-1)	1480-1 459 (500-1)	1480-1 1/2 459 (500-1 1/2)	1580-2 559 (600-2)