

WAAS CH 45615 W15A	APP CRS 151°	Rwy ldg 6600 TDZE 1020 Apt Elev 1021
--	------------------------	---

RNAV (GPS) RWY 15

MANKATO RGNL (MKT)

▼

Baro-VNAV NA when using Waseca altimeter setting. For uncompensated Baro-VNAV systems, LNAV/VNAV NA below -17°C (2°F) or above 46°C (114°F). DME/DME RNP-0.3 NA.

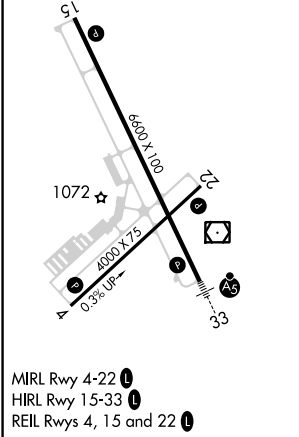
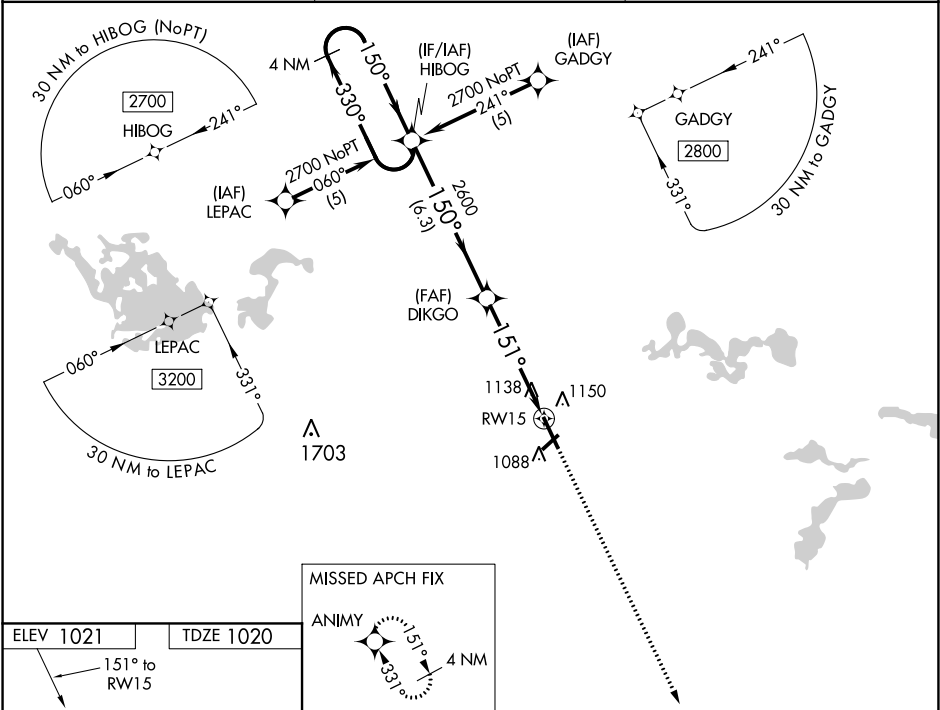
▲

When local altimeter setting not received, use Waseca altimeter setting; increase LPV DA to 1430 feet, LNAV/VNAV DA to 1473 feet and visibility LPV ¼ mile and LNAV/VNAV ½ mile all Cats; increase all MDA 60 feet and visibility LNAV Cat C and D ¼ mile.

MISSED APPROACH:

Climb to 2900 direct ANIMY and hold.

AWOS-3PT 118.175	MINNEAPOLIS CENTER 135.0 306.9	UNICOM 122.725 (CTAF) 1
----------------------------	--	-----------------------------------



MISSED APCH FIX		ANIMY	
ELEV 1021		TDZE 1020	
151° to RWY 15		4 NM	
4 NM Holding Pattern HIBOG		2900 ANIMY	
2700 ← 330°		150° →	
GP 3.00° TCH 48		*1 NM to RWY 15	
2600		RWY 15	
6.3 NM		3.7 NM	
1 NM		1 NM	
CATEGORY	A	B	C
LPV DA	1373-1 3/8	353 (400-1 1/8)	
LNAV/VNAV DA	1416-1 3/8	396 (400-1 3/8)	
LNAV MDA	1400-1	380 (400-1)	
CIRCLING	1460-1 439 (500-1)	1480-1 459 (500-1)	1480-1 1/2 459 (500-1 1/2)