

APP CRS	Rwy Idg	3000
056°	TDZE	1022
	Apt Elev	1031

RNAV (GPS) RWY 5

ST CLOUD RGNL (STC)

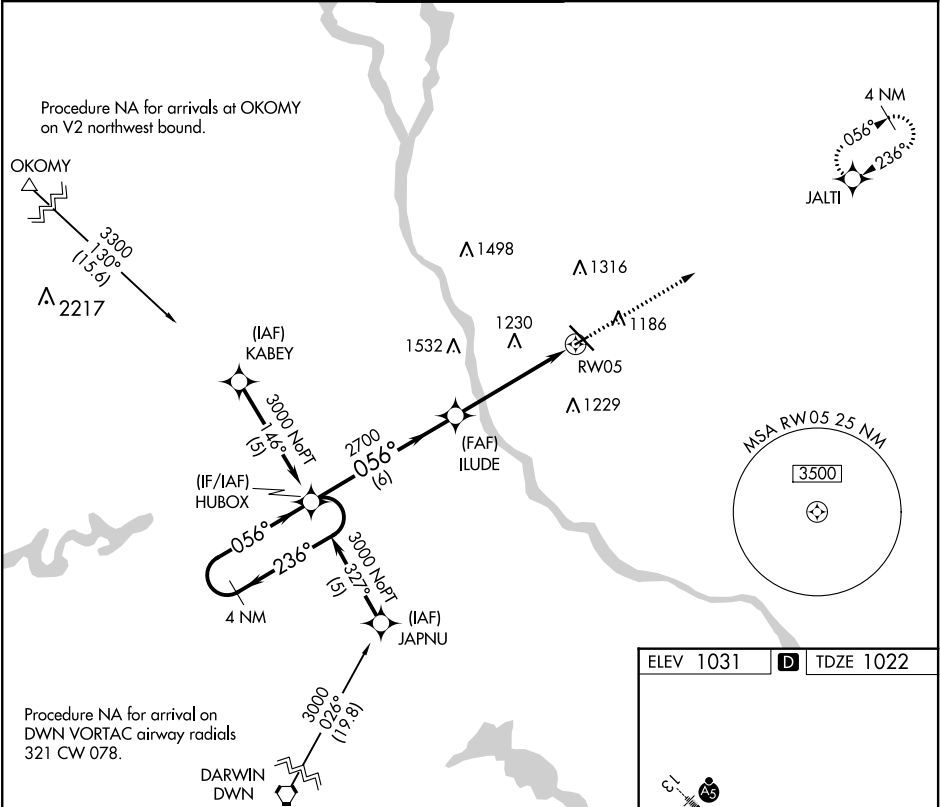
▼

▲

Rwy 5 helicopter visibility reduction below ¾ SM NA. DME/DME RNP-0.3 NA. VDP NA when using Little Falls altimeter setting. When local altimeter setting not received, use Little Falls altimeter setting and increase all MDA 80 feet and LNAV Cat C visibility ½ SM.

MISSED APPROACH:
Climb to 3000 direct JALTI and hold.

ATIS 119,375	MINNEAPOLIS CENTER 121.05 397.9	ST. CLOUD TOWER ★ 118.25 (CTAF) 0	GND CON 123.75	UNICOM 123.5
-----------------	------------------------------------	--------------------------------------	-------------------	-----------------



4 NM Holding Pattern

VGSI and descent angles not coincident (VGSI Angle 3.00/TCH 31).

3000 JALTI

HUBOX

ILUDE

RW05

3000 ← 236°

056° →

056°

2700

1.3 NM to RW05

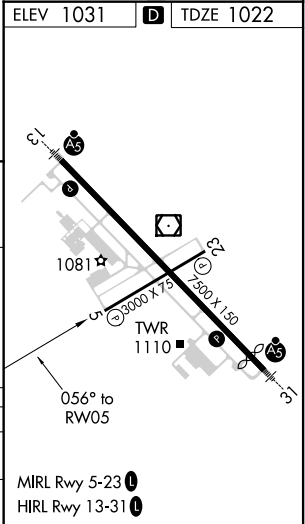
3.09° TCH 40

6 NM

3.7 NM

1.3 NM

CATEGORY	A	B	C	D
LNAV MDA	1480-1	458 (500-1)	1480-1⅓ 458 (500-1⅓)	NA
CIRCLING	1500-1	469 (500-1)	1500-1½ 469 (500-1½)	NA



NC-1, 31 DEC 2020 to 28 JAN 2021

NC-1, 31 DEC 2020 to 28 JAN 2021