

WAAS CH 99710 W32A	APP CRS 319°	Rwy Idg TDZE 1039 Apt Elev 1039
--	------------------------	---

RNAV (GPS) RWY 32

BENSON MUNI (BBB)

RNP APCH.

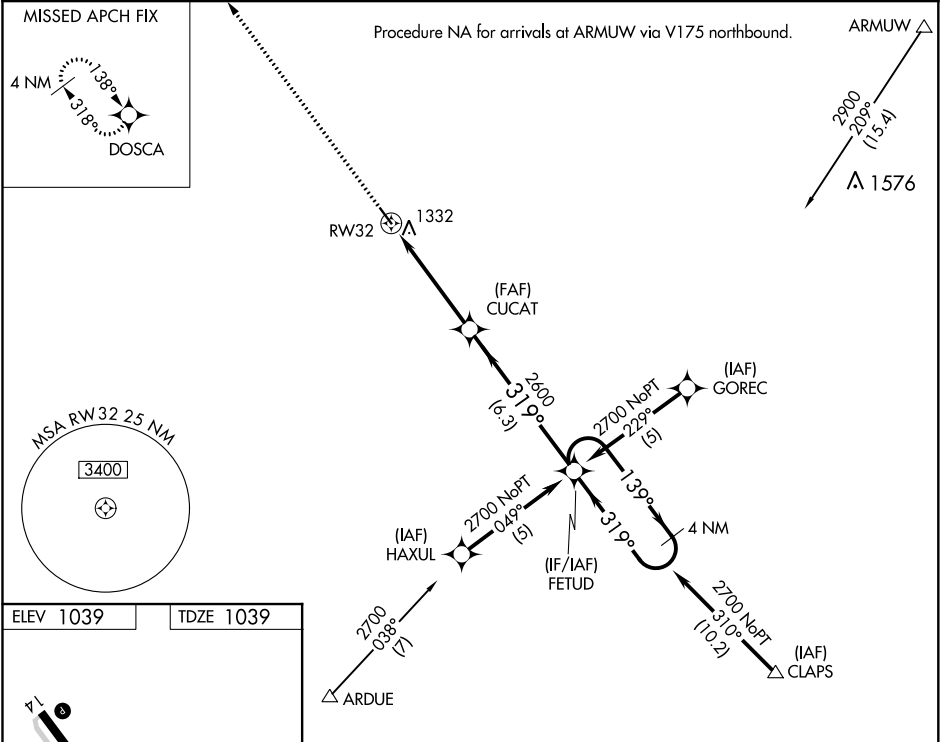
▼

▲

For uncompensated Baro-VNAV systems, LNAV/VNAV NA below -17°C or above 54°C. Rwy 32 helicopter visibility reduction below ¾ SM NA. Baro-VNAV NA when using Appleton altimeter setting. When local altimeter setting not received, use Appleton altimeter setting and increase all DA and MDA 40 feet.

MISSED APPROACH: Climb to 2700 direct DOSCA and hold.

AWOS-3 118.45	MINNEAPOLIS CENTER 125.5 323.1	UNICOM 122.8 (CTAF) 0
-------------------------	--	---------------------------------



2700 DOSCA

4 NM Holding Pattern

CUCAT

FETUD

RW32

2600

2700

139°

319°

4.7 NM

6.3 NM

GP 3.00° TCH 41

CATEGORY	A	B	C	D
LPV DA	1426-1½	387 (400-1½)	NA	
LNAV/VNAV DA	1710-2½	671 (700-2½)	NA	
LNAV MDA	1700-1	661 (700-1)	NA	

NC-1, 31 DEC 2020 to 28 JAN 2021

NC-1, 31 DEC 2020 to 28 JAN 2021