



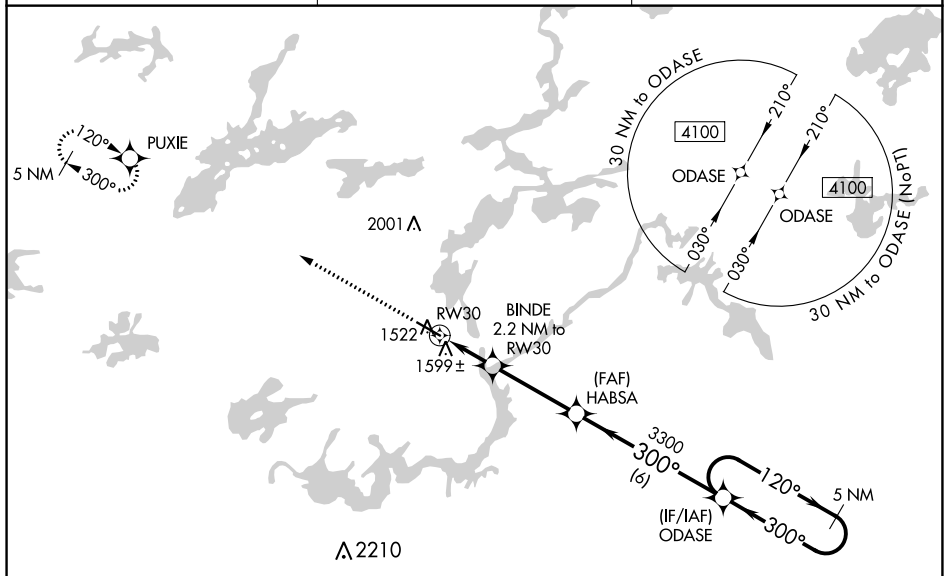


WAAS CH 93627 W30A	APP CRS 300°	Rwy Idg 5596 TDZE 1456 Apt Elev 1456
--	------------------------	---

RNAV (GPS) RWY 30
ELY MUNI (ELO)

   -39°C	Baro-VNAV NA when using Cook altimeter setting. For uncompensated Baro-VNAV systems, LNAV/VNAV NA below -17°C (2°F) or above 34°C (93°F). DME/DME RNP-0.3 NA. Helicopter visibility reduction below ¾ SM NA. When local altimeter setting not received, use Cook altimeter setting and increase all DA/MDA 100 feet; increase LPV visibility ½ mile all Cats, LNAV/VNAV visibility ¾ mile all Cats, and LNAV Cat C/D visibility ½ mile.	MISSED APPROACH: Climb to 4100 direct PUXIE and hold.
AWOS-3 132.025	MINNEAPOLIS CENTER 127.9 281.45	UNICOM 122.8 (CTAF) 



ELEV 1456		TDZE 1456
-----------	--	-----------

