

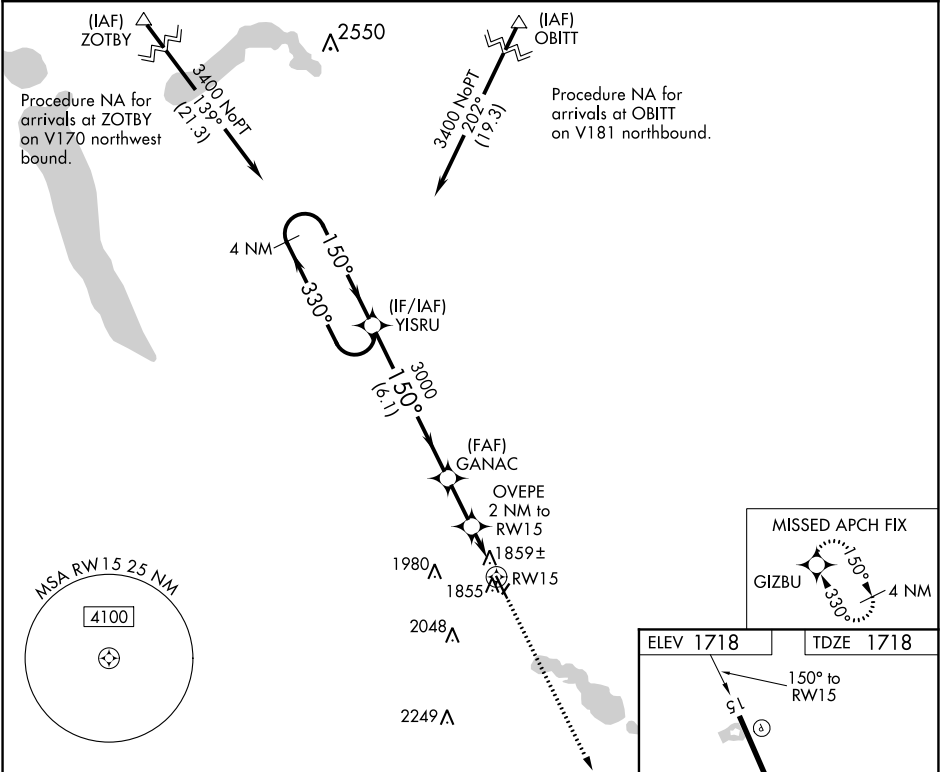
APP CRS	Rwy Idg	5000
150°	TDZE	1718
	Apt Elev	1718

RNAV (GPS) RWY 15
MADISON MUNI (MDS)

⚠ Circling NA to Rwy 3 and 21. Rwy 15 helicopter visibility reduction below ¾ SM NA. DME/DME RNP-0.3 NA. When local altimeter setting not received, use Brookings altimeter setting and increase all MDAs 60 feet and LNAV Cat C/D visibility ¼ SM.

MISSED APPROACH: Climb to 3400 direct GIZBU and hold.

AWOS-3 118.35	MINNEAPOLIS CENTER 132.05 317.4	GCO 121.725	UNICOM 122.8 (CTAF) 0
------------------	------------------------------------	----------------	---------------------------------



4 NM Holding Pattern

YISRU

3400 ← 330° 150° →

GANAC

OVEPE 2 NM to RW15

3000

TCH 32

2380

RW15

6.1 NM 1.9 NM 2 NM

3400

GIZBU

ELEV 1718

TDZE 1718

150° to RW15

5000 x 75

1756

2380 x 200

33

CATEGORY	A	B	C	D
LNAV MDA	2120-1	402 (500-1)	2120-1½	402 (500-1½)
CIRCLING	2180-1	462 (500-1)	2180-1½ 462 (500-1½)	2280-2 562 (600-2)

MIRL Rwy 15-33 **0** 1733 **Λ**

REIL Rwy 15 and 33 **0**

NC-1, 31 DEC 2020 to 28 JAN 2021

NC-1, 31 DEC 2020 to 28 JAN 2021