

STAPLES, MINNESOTA

AL-6105 (FAA)

20310

NDB SAZ <u>257</u>	APP CRS 137°	Rwy Idg 3305 TDZE 1288 Apt Elev 1288
------------------------------	------------------------	---

NDB RWY 14
STAPLES MUNI (SAZ)

RADAR required for procedure entry.

T Rwy 14 helicopter visibility reduction below 1 SM NA.
A NA Straight-in/Circling Rwy 14 NA at night.

MISSED APPROACH: Climb to 3000 then right turn direct SAZ NDB and hold.

AWOS-3 118.325	MINNEAPOLIS CENTER 118.05 239.0	GCO 121.725	CTAF 122.9 0
--------------------------	---	-----------------------	------------------------

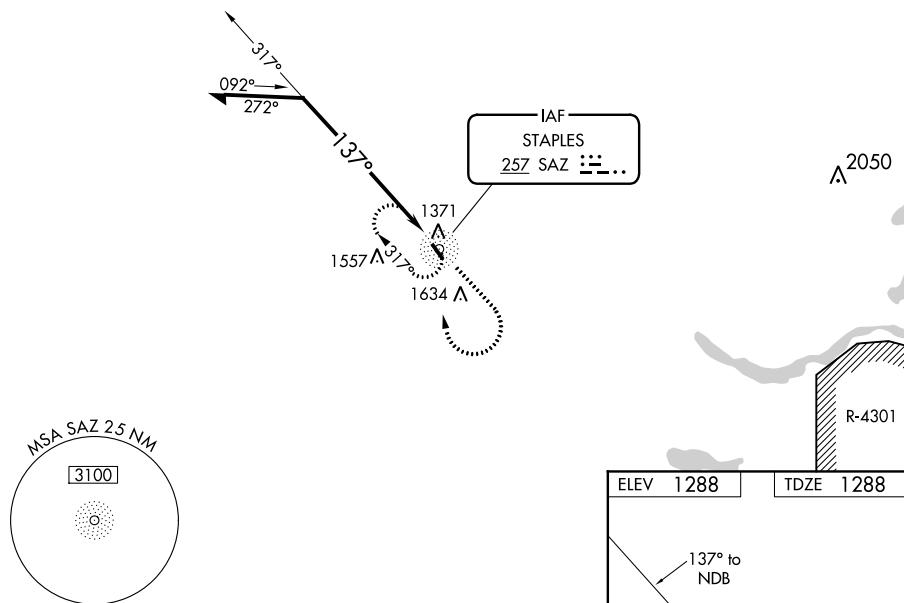



Diagram illustrating the SAZ NDB approach. The approach is defined by a 317° heading to the NDB and a 137° heading from the NDB. The altitude is 3000m. The diagram shows a 3000m altitude, a 317° heading, and a 137° heading. A diagram shows a 3000m altitude, a 317° heading, and a 137° heading.

CATEGORY	A	B	C	D
S-14	1920-1 632 (700-1)		1920-1 ³ / ₄ 632 (700-1 ³ / ₄)	NA
 CIRCLING	1920-1 632 (700-1)	1940-1 652 (700-1)	1940-1 ³ / ₄ 652 (700-1 ³ / ₄)	NA

REIL Rwy 14 and 32

MIRL Rwy 14-32

STAPLES, MINNESOTA

Amdt 3C 21MAY20

46°23'N-94°48'W

STAPLES MUNI (SAZ)
NDB RWY 14

NC-1, 31 DEC 2020 to 28 JAN 2021