

NDB LXL <u>359</u>	APP CRS 312°	Rwy Idg 4010 TDZE 1123 Apt Elev 1122
------------------------------	------------------------	---

NDB RWY 31
LINDBERGH FIELD (LXL)

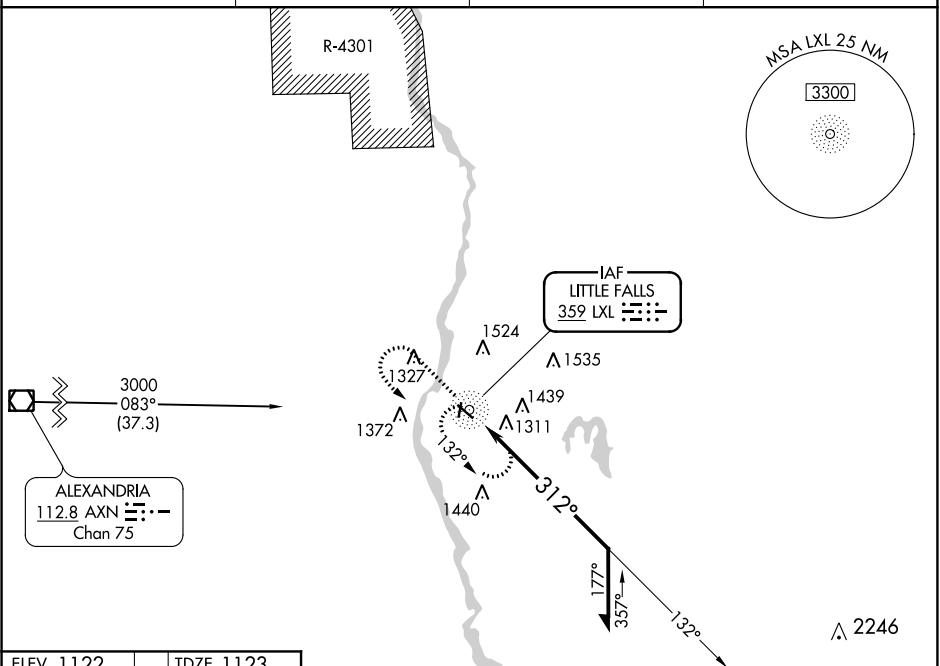
LITTLE FALLS/MORRISON COUNTY-LINDBERGH FIELD (LXL)

<p>NA</p> <p>Circling Rwy 18, 36 NA. Rwy 31 helicopter visibility reduction below $\frac{3}{4}$ SM NA.</p>	<p>MISSED APPROACH: Climb to 3000 then left turn direct LXL NDB and hold.</p>
--	--

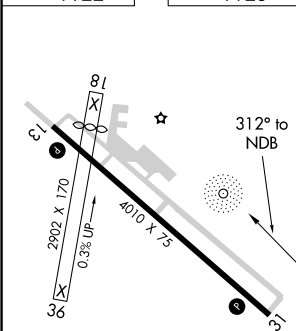
AWOS-3
119.45

MINNEAPOLIS CENTER
118.05 239.0

GCO
121.725

UNICOM
122.8 (CTAF) **L**

ELEV 1122		TDZE 1123
-----------	--	-----------



REIL Rwy 13 and 31 **L**
MIRL Rwy 13-31 **L**

LITTLE FALLS/MORRISON COUNTY-LINDBERGH FIELD (LXL)
45°57'N-94°21'W **NDB RWY 31**

NDB RWY 31