

WAAS CH 99317 W34A	APP CRS 340°	Rwy Idg TDZE Apt Elev	5000 1257 1266
--	------------------------	-----------------------------	---

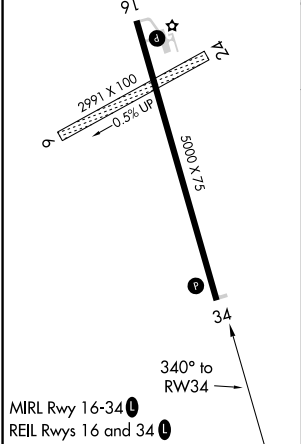
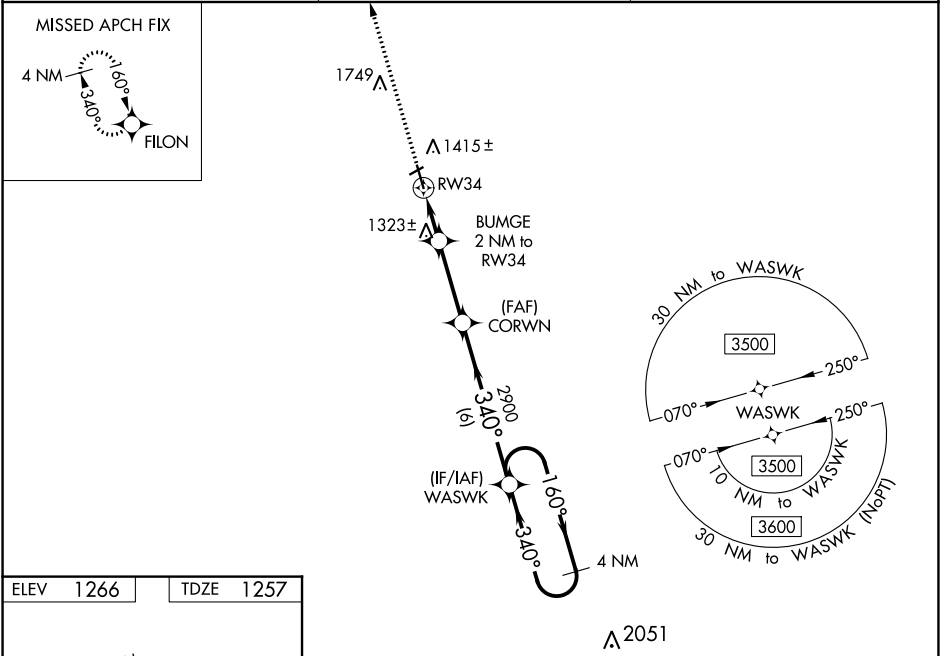
RNAV (GPS) RWY 34

GWINNER-ROGER MELROE FIELD (GWR)

Circling NA to Rws 6 and 24. For uncompensated Baro-VNAV systems, LNAV/VNAV NA below -17°C (2°F) or above 54°C (130°F). DME/DME RNP-0.3 NA. When local altimeter setting not received use Fargo altimeter setting: increase all DA to 1683 feet and all visibilities ½ SM; increase all MDAs 180 feet and visibility LNAV Cat C/D ½ SM, and Circling Cat C ¾ SM, and Circling Cat D ½ SM. Baro-VNAV and VDP NA when using Fargo altimeter setting.

MISSED APPROACH:
Climb to 3500 direct
FILON and hold.

AWOS-3 118.325	MINNEAPOLIS CENTER 127.35 278.3	UNICOM 122.7(CTAF) 1
--------------------------	---	--------------------------------



3500	FILON	VGSi and RNAV glidepath not coincident (VGSi Angle 3.00/TCH 25).			
*LNAV only.		BUMGE 2 NM to RW34	CORWN 2900	WASWK 4 NM Holding Pattern	160° 340° 3500
		*0.9 NM to RW34	*1920	2900	GP 3.00° TCH 40
		0.9 NM	1.1 NM	3 NM	6 NM
CATEGORY	A	B	C	D	
LPV DA	1507-1		250 (300-1)		
LNAV/VNAV DA	1507-1		250 (300-1)		
LNAV MDA	1580-1		323 (400-1)		
CIRCLING	1780-1	514 (600-1)	1840-1½ 574 (600-1½)	2060-2½ 794 (800-2½)	