

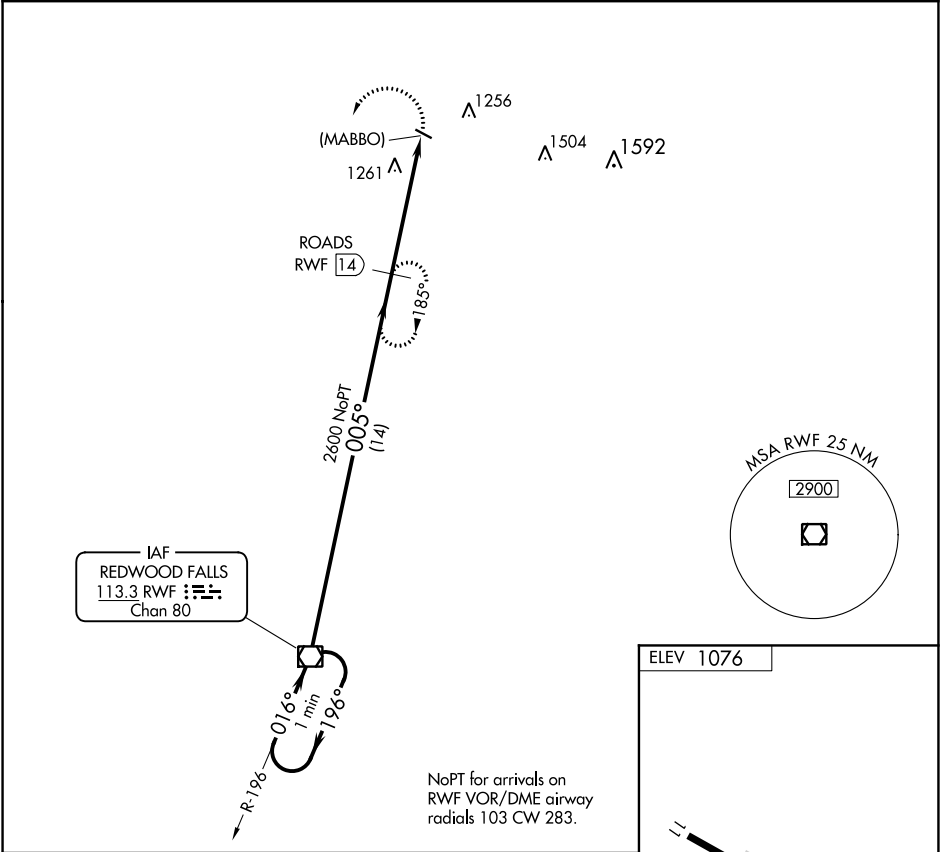
VOR/DME RWF	APP CRS	Rwy Idg	N/A
113.3	005°	TDZE	N/A
Chan 80		Apt Elev	1076

VOR/DME or GPS-A
OLIVIA RGNL (OVL)

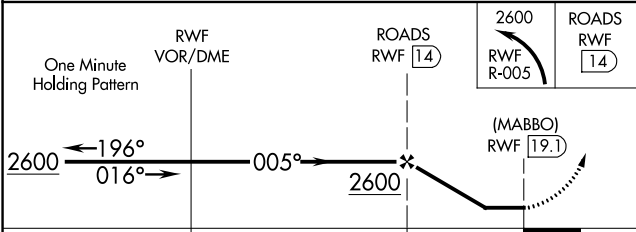
**NA**

MISSED APPROACH: Climbing left turn to 2600 via RWF R-005 to ROADS 14 DME and hold.

AWOS-3 119.275	MINNEAPOLIS CENTER 127.1 290.2	UNICOM 122.8 (CTAF)
--------------------------	--	-------------------------------




One Minute Holding Pattern



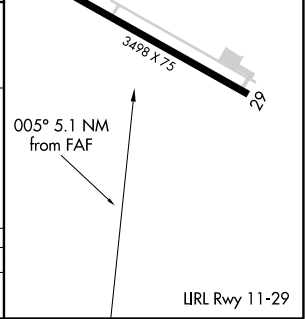
2600 RWF R-005

ROADS RWF 14

(MABBO) RWF 19.1

CATEGORY	A	B	C	D
 CIRCLING	1620-1	544 (600-1)	1720-1¾ 644 (700-1¾)	1720-2 644 (700-2)

ELEV 1076



URL Rwy 11-29

NC-1, 31 DEC 2020 to 28 JAN 2021

NC-1, 31 DEC 2020 to 28 JAN 2021