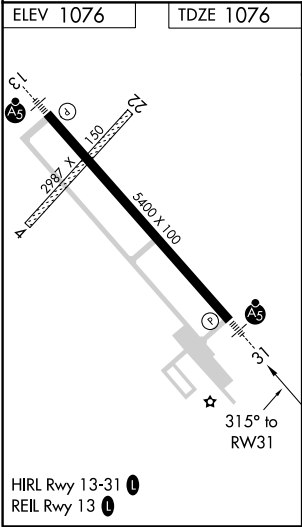
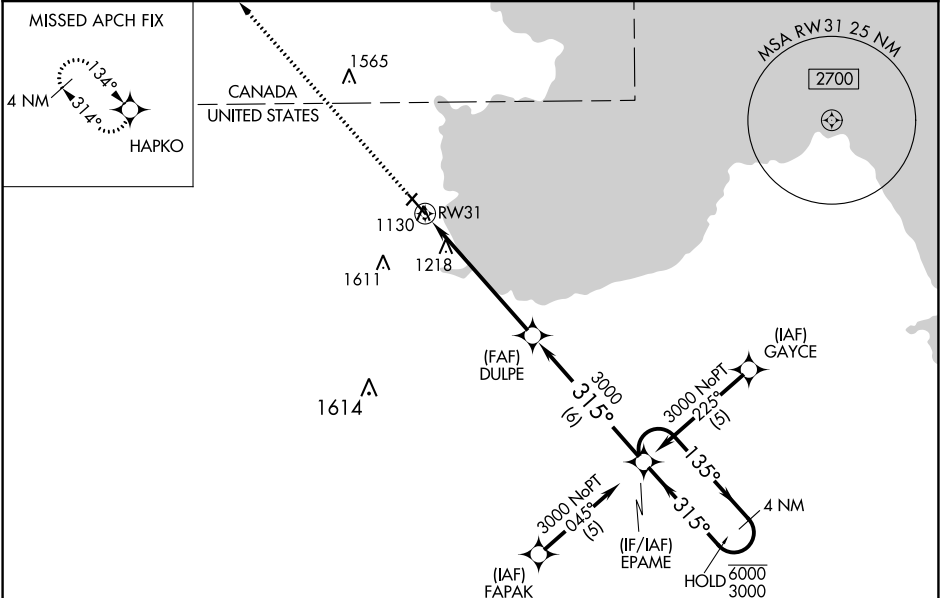


WAAS CH <b>42706</b> <b>W31A</b>	APP CRS <b>315°</b>	Rwy Idg TDZE Apt Elev	<b>5400</b> <b>1076</b> <b>1076</b>
--	------------------------	-----------------------------	---

RNAV (GPS) RWY 31  
WARROAD INTL MEMORIAL (R.R.T)

RNP APCH. ▼ ▲ -37°C Circling NA to Rwy 4 and 22. For uncompensated Baro-VNAV systems, LNAV/VNAV NA below -17°C or above 54°C. For inop ALS increase LNAV/VNAV all Cats visibility to 1 SM and LNAV Cat C/D visibility to 1½ SM.	MALSR A5	MISSED APPROACH: Climb to 3000 direct HAPKO and hold.
---	-------------	---

AWOS-3 <b>119.925</b>	MINNEAPOLIS CENTER <b>134.75 251.1</b>	GCO <b>121.725</b>	UNICOM <b>123.05 (CTAF) 0</b>
--------------------------	---	-----------------------	----------------------------------



3000 HAPKO	VGSI and RNAV glidepath not coincident (VGSI Angle 3.00/TCH 29).			
*LNAV only.	DULPE 3000 EPAME 4 NM Holding Pattern RW31 315° GP 3.00° TCH 45			
	1.2 NM	4.6 NM	6 NM	
CATEGORY	A	B	C	D
LPV DA	1326-½ 250 (300-½)			
LNAV/VNAV DA	1451-¾ 375 (400-¾)			
LNAV MDA	1480-½ 404 (500-½)	1480-¾ 404 (500-¾)	1480-1 404 (500-1)	1480-1 404 (500-1)
CIRCLING	1500-1 424 (500-1)	1540-1 464 (500-1)	1960-2¾ 884 (900-2¾)	1960-3 884 (900-3)

NC-1, 31 DEC 2020 to 28 JAN 2021

NC-1, 31 DEC 2020 to 28 JAN 2021