

WAAS  
CH **77622**  
**W15A**

APP CRS  
**148°**

Rwy Idg  
TDZE **1061**  
Apt Elev **1062**

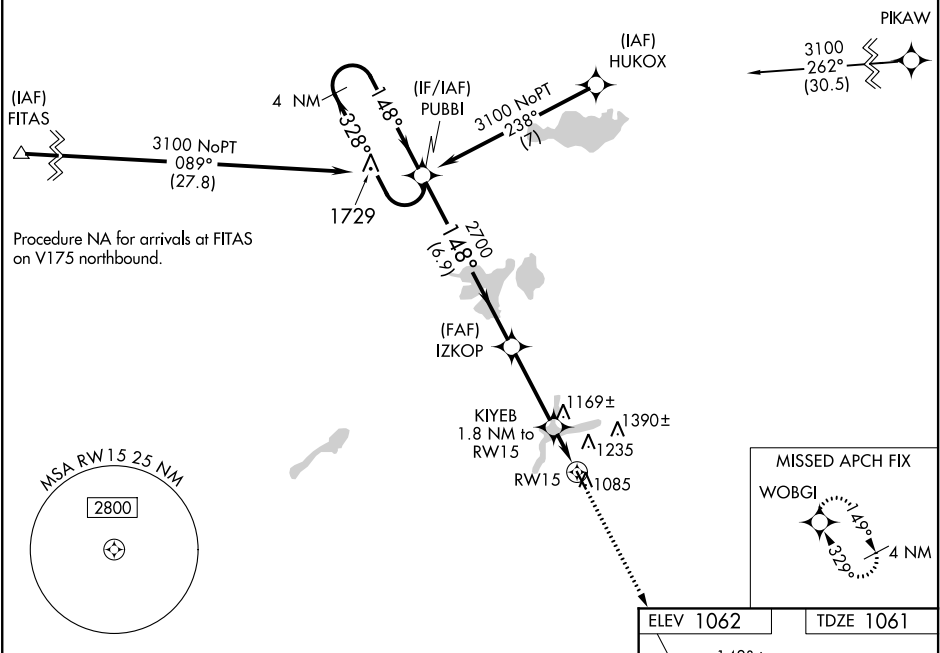
**RNAV (GPS) RWY 15**

HUTCHINSON MUNI-BUTLER FIELD (HCD)

**⚠** Baro-VNAV NA when using Glencoe altimeter setting. For uncompensated Baro-VNAV systems, LNAV/VNAV NA below -17°C (2°F) or above 54°C (130°F). DME/DME RNP-0.3 NA. VDP NA with Glencoe altimeter setting. When local altimeter setting not received, use Glencoe altimeter setting and increase all DA 43 feet and LPV and LNAV/VNAV all Cats visibility ½ mile; increase all MDA 60 feet and LNAV Cat C visibility ¼ mile.

MISSED APPROACH: Climb to 3000 direct WOBGI and hold.

|                          |  |                       |                                 |
|--------------------------|--|-----------------------|---------------------------------|
| AWOS-3<br><b>118.525</b> | MINNEAPOLIS CENTER<br><b>127.1 290.2</b> | GCO<br><b>121.725</b> | UNICOM<br><b>122.8 (CTAF) 0</b> |
|--------------------------|--|-----------------------|---------------------------------|



4 NM Holding Pattern  
PUBBI

3100 ← 328°  
148° →

GP 3.00°  
TCH 40

IZKOP 2700

3000 WOBGI

KIYEB 1.8 NM to RWY 15

\* LNAV only

\* 1 NM to RWY 15

RWY 15

6.9 NM

3.2 NM

0.8 NM

1 NM

\* 1640

| CATEGORY     | A        | B             | C                       | D  |
|--------------|----------|---------------|-------------------------|----|
| LPV DA       | 1311-7/8 | 250 (300-7/8) |                         | NA |
| LNAV/VNAV DA | 1328-7/8 | 267 (300-7/8) |                         | NA |
| LNAV MDA     | 1420-1   | 359 (400-1)   |                         | NA |
| CIRCLING     | 1540-1   | 478 (500-1)   | 1540-1½<br>478 (500-1½) | NA |

ELEV 1062

TDZE 1061

148° to RWY 15

4000 X 75

33

MIRL Rwy 15-33 0

REIL Rwy 15 and 33 0