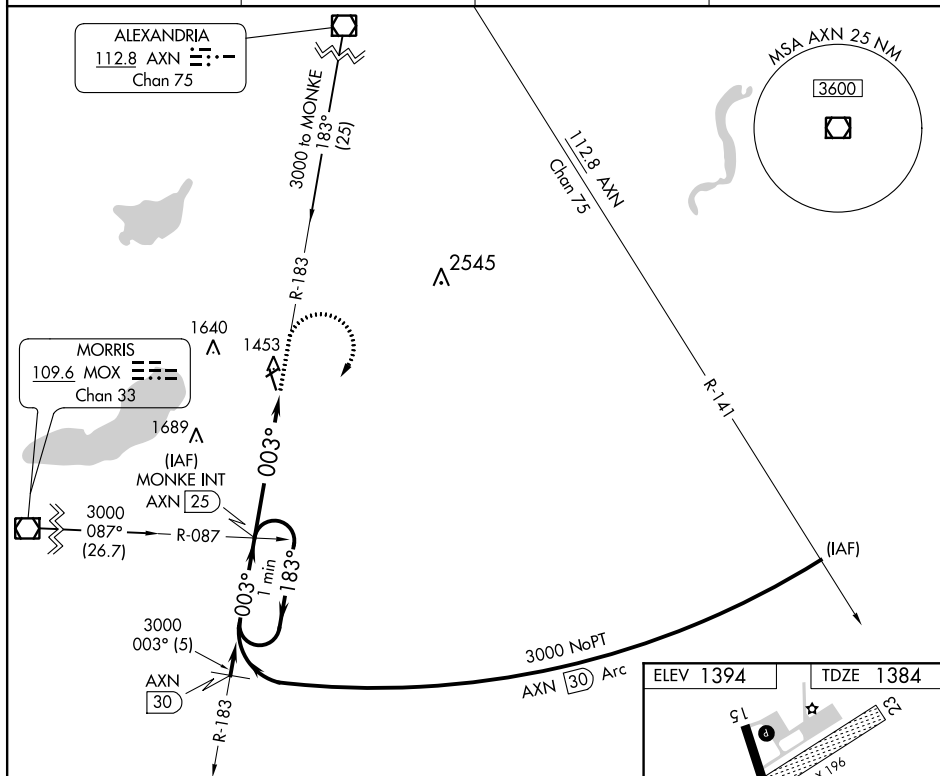
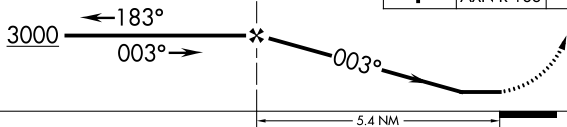


VOR RWY 33  
GLENWOOD MUNI (GHW)

**MISSED APPROACH:** Climb to 2000, then climbing right turn to 3000 via AXN R-183 to MONKE INT/25 DME and hold.

CTAF  
122.9 L

MONKE INT  
AXN (25)



CATEGORY	A	B	C	D
S-33	1880-1	496 (500-1)	1880-1¼ 496 (500-1¼)	NA
CIRCLING	1880-1	486 (500-1)	1880-1½ 486 (500-1½)	NA

GLENWOOD MUNI (GHW)  
VOR RWY 33