

WAAS CH 97532 W16A	APP CRS 164°	Rwy Idg TDZE Apt Elev	4500 1299 1304
--	------------------------	-----------------------------	---

RNAV (GPS) RWY 16

DODGE CENTER (TOB)

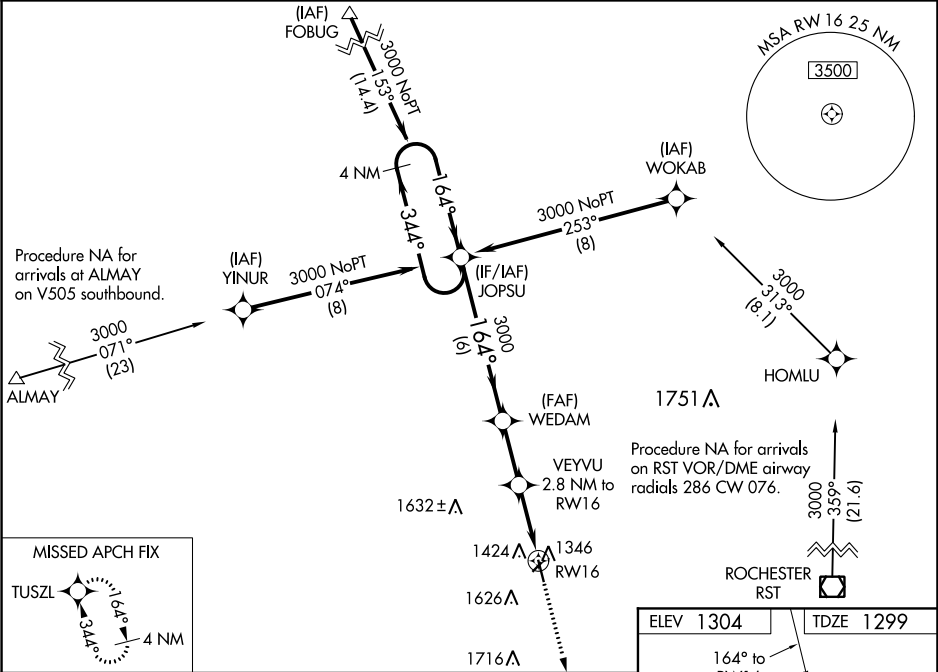
⚠

⚠

For uncompensated Baro-VNAV systems, LNAV/VNAV NA below -17°C (2°F) or above 54°C (130°F). DME/DME RNP-0.3 NA. Baro-VNAV and VDP NA with Rochester Intl altimeter setting. When local altimeter setting not received, use Rochester Intl altimeter setting and increase all DA 39 feet and all MDA 40 feet, and increase LNAV/VNAV all Cats, LNAV Cat C visibility ⅓ mile, and Circling Cat C visibility ¼ mile.

MISSED APPROACH: Climb to 3000 direct TUSZL and hold.

AWOS-3 119.075	ROCHESTER APP CON ★ 119.8 251.125	CTAF 122.9
--------------------------	---	----------------------



VGSI and RNAV glidepath not coincident (VGSI Angle 3.00/TCH 28).

4 NM Holding Pattern

GP 3.00° TCH 40

3000 ← 344° → 164° → 3000

6 NM 2.4 NM 1.7 NM 1.1 NM

WEDAM 3000

VEYVU 2.8 NM to RW16

*2220

*LNAV only.

1.1 NM to RW16

RW16

CATEGORY	A	B	C	D
LPV DA	1549-1	250 (300-1)		NA
LNAV/VNAV DA	1586-1	287 (300-1)		NA
LNAV MDA	1680-1	381 (400-1)	1680-1½ 381 (400-1½)	NA
CIRCLING	1960-1	656 (700-1)	1960-1¾ 656 (700-1¾)	NA

