

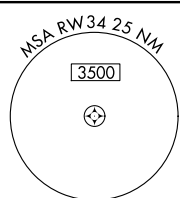
WAAS CH 45633 W34A	APP CRS 344°	Rwy Idg 4500 TDZE 1304 Apt Elev 1304
--	------------------------	---

RNAV (GPS) RWY 34
DODGE CENTER (TOB)

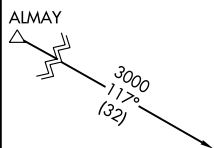
Baro-VNAV NA when using Rochester Inlt altimeter setting. For uncompensated Baro-VNAV systems, INAV/VNAV NA below -17°C (2°F) or above 54°C (130°F), DME/DME RNP-0.3 NA. When local altimeter setting not received, use Rochester Inlt altimeter setting and increase all DA 39 feet and all MDA 40 feet, and increase INAV Cat C visibility ½ mile and Circling Cat C visibility ¼ mile. Rwy 34 Straight-in and Circling minimums NA at night.

MISSED APPROACH: Climb to 3000
direct JOPSU and hold.

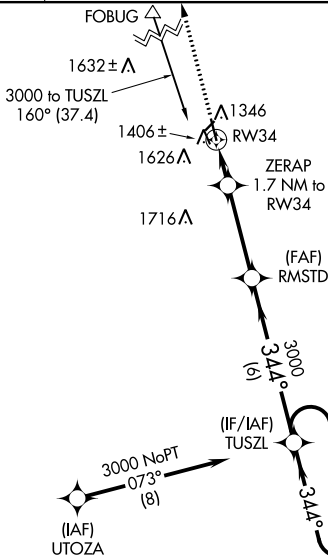
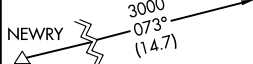
AWOS-3 119.075	ROCHESTER APP CON ★ 119.8 251.125	CTAF 122.9 0
--------------------------	---	------------------------



Procedure NA for arrivals at
ALMAY on V505 northbound.



Procedure NA for arrivals at NEWRY on V213 southbound.



MISSED APCH FIX



Procedure NA for arrivals
on RST VOR/DME airway
radials 213 CW 329.

