

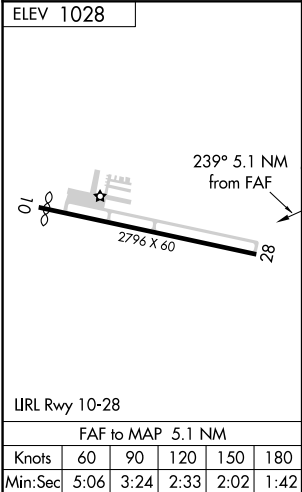
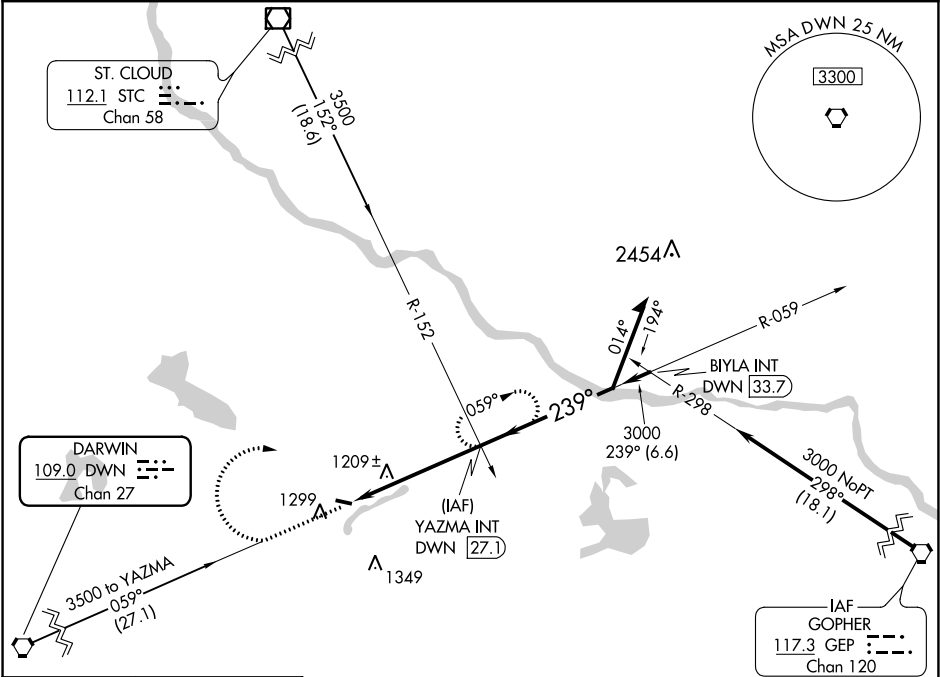
VORTAC DWN	APP CRS	Rwy Idg	N/A
109.0	239°	TDZE	N/A
Chan 27		Apt Elev	1028

VOR-A
MAPLE LAKE MUNI-BILL MAVENCAMP SR FIELD (MGG)

⚠ When local altimeter setting not received, use Buffalo altimeter setting and increase all MDA 40 feet and increase Circling Cat C visibility ¼ mile.
Night Landing: Rwy 28 NA. Helicopter visibility reduction below 1 SM NA.

MISSED APPROACH: Climb to 2000 then climbing right turn to 3500 via DWN R-059 to YAZMA INT/27.1 DME and hold.

AWOS-3 128.325	MINNEAPOLIS APP CON 126.5 335.65	UNICOM 122.8 (CTAF)
-------------------	-------------------------------------	------------------------



2000	3500	YAZMA INT	YAZMA INT DWN 27.1	Remain within 10 NM
DWN R-059				
DWN 22				
	5.1 NM			
CATEGORY	A	B	C	D
CIRCLING	1660-1 632 (700-1)	1660-1¼ 632 (700-1¼)	1660-1¾ 632 (700-1¾)	NA

NC-1, 31 DEC 2020 to 28 JAN 2021

NC-1, 31 DEC 2020 to 28 JAN 2021