

NDB FSE <u>224</u>	APP CRS 356°	Rwy Idg TDZE Apt Elev	3502 1279 1279
------------------------------	------------------------	-----------------------------	---

NDB RWY 34
FOSSTON MUNI-ANDERSON FIELD (FSE)

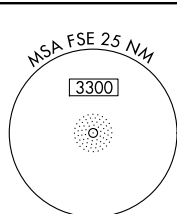
<p>T A</p>	<p>When local altimeter setting not received, use Thief River Falls Rgnl altimeter setting and increase all MDA 100 feet and increase all Cat A and Circling Cat C visibility ¼ mile.</p>	<p>MISSED APPROACH: Climb to 3100 then right turn direct FSE NDB and hold.</p>
------------------------------	---	--

AWOS-3
118,35


MINNEAPOLIS CENTER
134.75 251.1

GCO
121.725

CTAF
122.9 **L**



ZALSO Δ
3100
161°
(23.5)

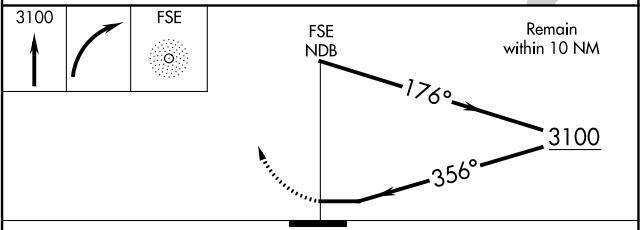
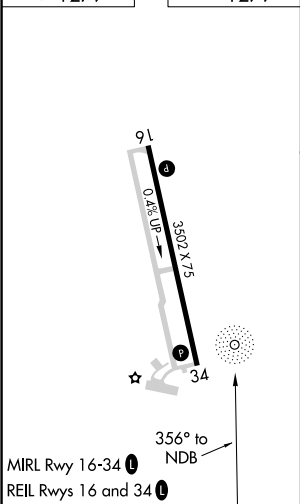

 3100
 080°
 (23.1)

IAF
FOSSTON
224 FSE

47
A¹⁶¹⁸

 Δ^{2110}

ELEV 1279		TDZE 1279
-----------	--	-----------



CATEGORY	A	B	C	D
S-34	2060-1 781 (800-1)	2060-1¼ 781 (800-¼)	2060-2½ 781 (800-2½)	NA
CIRCLING	2060-1 781 (800-1)	2060-1¼ 781 (800-¼)	2060-2½ 781 (800-2½)	NA

FOSSTON, MINNESOTA
Amdt 4B 08NOV18

FOSSTON MUNI-ANDERSON FIELD (FSE)
NDB RWY 34

47°36'N-95°46'W

NC-1, 31 DEC 2020 to 28 JAN 2021