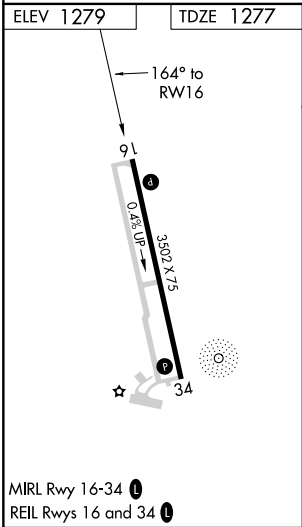
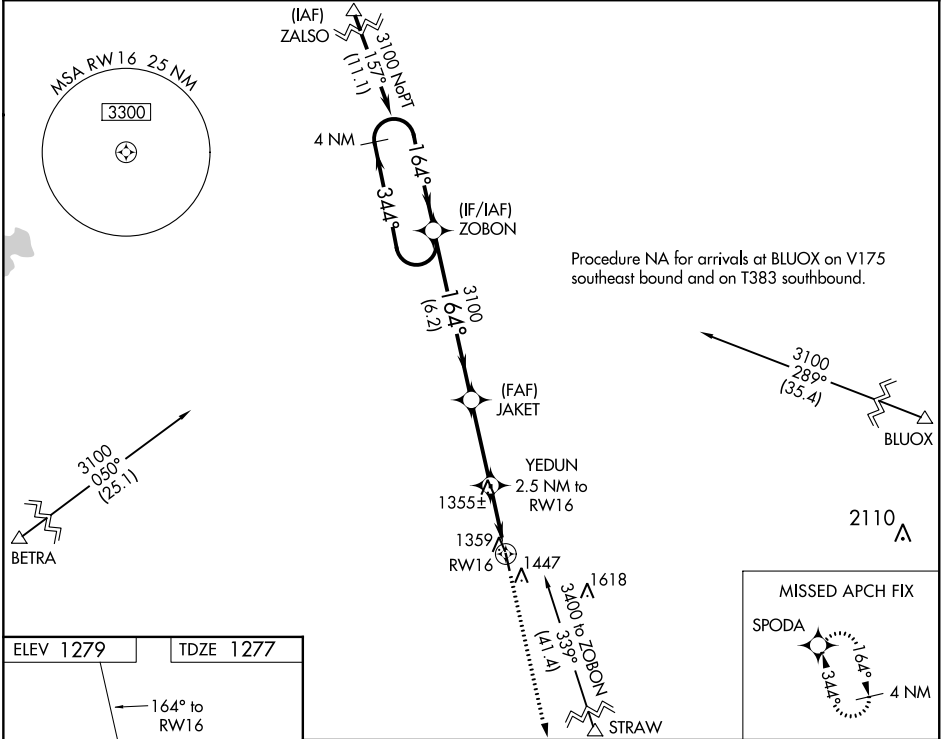


WAAS CH 82226 W16A	APP CRS 164°	Rwy Idg TDZE 1277 Apt Elev 1279
--	------------------------	---

RNAV (GPS) RWY 16
FOSSTON MUNI-ANDERSON FIELD (F'SE)

RNP APCH.		MISSED APPROACH: Climb to 4000 direct SPODA and hold.
VDP NA with Thief River Falls altimeter setting. When local altimeter setting not received, use Thief River Falls altimeter setting and increase all MDA 100 feet and increase LP and LNAV Cat C visibility $\frac{3}{8}$ SM, Circling Cat C visibility $\frac{1}{2}$ SM.		

AWOS-3 118.35	MINNEAPOLIS CENTER 134.75 251.1	GCO 121.725	CTAF 122.9 0
-------------------------	---	-----------------------	------------------------



VGSI and descent angles not coincident (VGSI Angle 2.80/TCH 25).			
4 NM Holding Pattern			
ZOBON			
JAKET			
YEDUN 2.5 NM to RW16			
3100 ← 344° → 164° → 3100			
3.00° TCH 40			
1.1 NM to RW16			
2100			
6.2 NM 3.1 NM 1.4 NM 1.1 NM			
CATEGORY	A	B	C
LP MDA	1620-1	343 (400-1)	NA
LNAV MDA	1640-1	363 (400-1)	NA
CIRCLING	1860-1	581 (600-1)	1860-1½ 581 (600-1½)

NC-1, 31 DEC 2020 to 28 JAN 2021

NC-1, 31 DEC 2020 to 28 JAN 2021