

WAAS CH <b>90326</b> <b>W34A</b>	APP CRS <b>344°</b>	Rwy Idg <b>3502</b> TDZE <b>1279</b> Apt Elev <b>1279</b>
--	------------------------	---

# RNAV (GPS) RWY 34

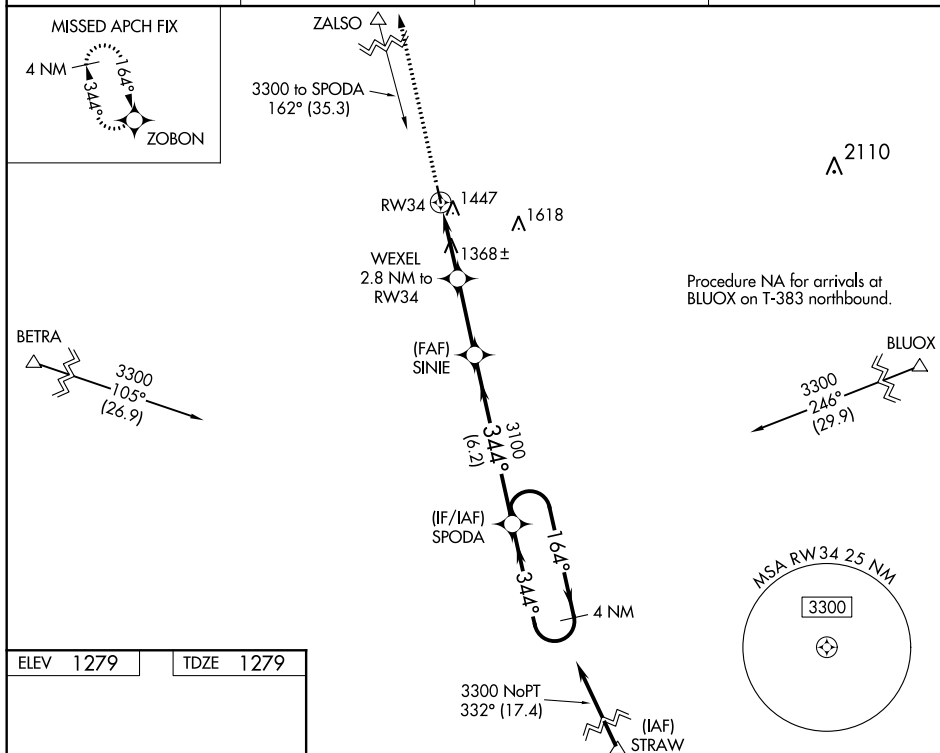
## FOSSTON MUNI-ANDERSON FIELD (FSE)

RNP APCH.

**T** VDP NA when using Thief River Falls altimeter setting. When local altimeter setting not received, use Thief River Falls altimeter setting and increase all MDA 100 feet and increase LP and LNAV Cat C visibility  $\frac{3}{8}$  SM, and increase Circling Cat C visibility  $\frac{1}{2}$  SM.

**MISSED APPROACH:**  
Climb to 4000 direct  
ZOBON and hold.

AWOS-3 118.35	MINNEAPOLIS CENTER 134.75 251.1	GCO 121.725	CTAF 122.9
------------------	------------------------------------	----------------	---------------



4000

ZOBON

VGSI and descent angles not coincident (VGSI Angle 2.80/TCH 25).

WEXEL 2.8 NM to RW34

SINIE

3.00 NM TCH 40

344°

3100

2200

1.1 NM to RW34

1.7 NM

2.8 NM

6.2 NM

4 NM Holding Pattern

3300

164°

344°

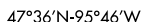
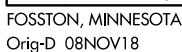
34

344° to RW34

MIRL Rwy 16-34

REIL Rws 16 and 34

CATEGORY	A	B	C	D
LP MDA	1620-1	341 (400-1)		NA
LNAV MDA	1760-1	481 (500-1)	1760-1 <sup>3</sup> / <sub>8</sub> 481 (500-1 <sup>3</sup> / <sub>8</sub> )	NA
CIRCLING	1860-1	581 (600-1)	1860-1 <sup>1</sup> / <sub>2</sub> 581 (600-1 <sup>1</sup> / <sub>2</sub> )	NA



FOSSTON MUNI-ANDERSON FIELD (FSE)  
RNAV (GPS) RWY 34