

WAAS CH 42530 W16A	APP CRS 159°	Rwy Idg TDZE 1023 Apt Elev 1023
--	------------------------	---

RNAV (GPS) RWY 16

WHEATON MUNI (ETH)

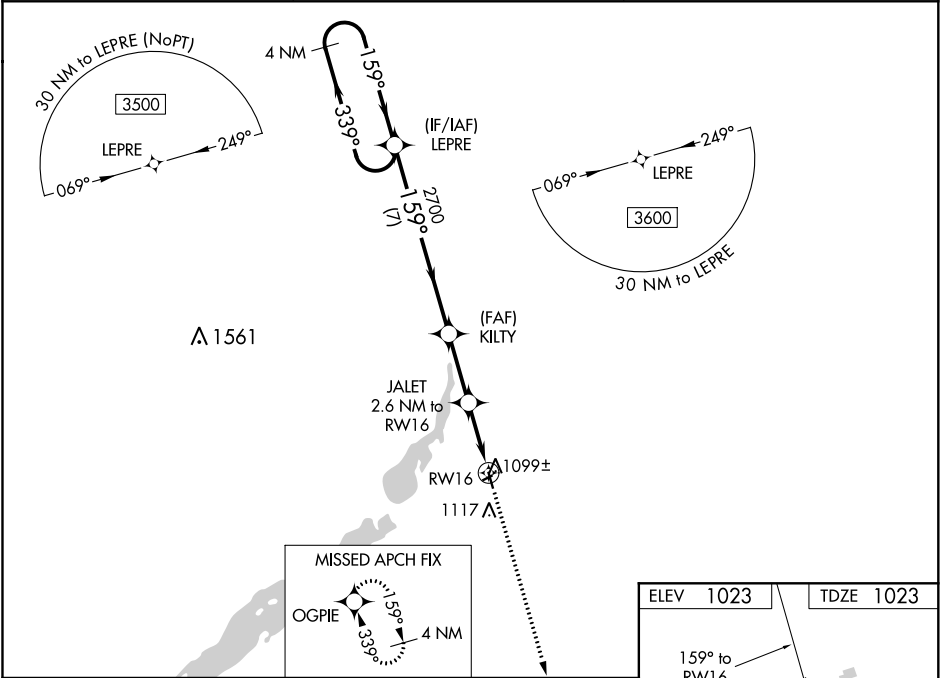
⚠

⚠

When VGSI inop, Circling Rwy 34 NA at night. DME/DME RNP-0.3 NA.
Visibility reduction by helicopters NA.
VDP NA with Wahpeton/Harry Stern altimeter setting.
When local altimeter setting not received, use Wahpeton/Harry Stern altimeter setting and increase all MDA 80 feet, increase LP Cat C visibility to 1½ and LNAV Cat C visibility to 1¼ mile.

MISSED APPROACH: Climb to 3500 direct OGPIE and hold.

AWOS-3 118.775	MINNEAPOLIS CENTER 126.1 269.2	UNICOM 122.8 (CTAF) 1
--------------------------	--	--



VGSI and descent angles not coincident (VGSI Angle 3.00/TCH 25).				
<div><div>4 NM Holding Pattern</div><div>3500 ← 339° → 159° → 159° → 2700</div><div>3500</div><div>OGPIE</div><div>↑</div></div>				
<div><div>7 NM</div><div>2.6 NM</div><div>1.6</div><div>0.9</div></div>				
CATEGORY	A	B	C	D
LP MDA	1340-1		317 (400-1)	NA
LNAV MDA	1360-1		337 (400-1)	NA
CIRCLING	1480-1		457 (500-1)	1480-1½ 457 (500-1½)

ELEV 1023

TDZE 1023

159° to RW16

91

1953 X 175

3298 X 75

34

MIRL Rwy 16-34 **1**

NC-1, 31 DEC 2020 to 28 JAN 2021

NC-1, 31 DEC 2020 to 28 JAN 2021