

WAAS
CH 87124
W34A

APP CRS
344°

Rwy Idg
TDZE 1097
Apt Elev 1101

RNAV (GPS) RWY 34

ORTONVILLE MUNI-MARTINSON FIELD (V V V)

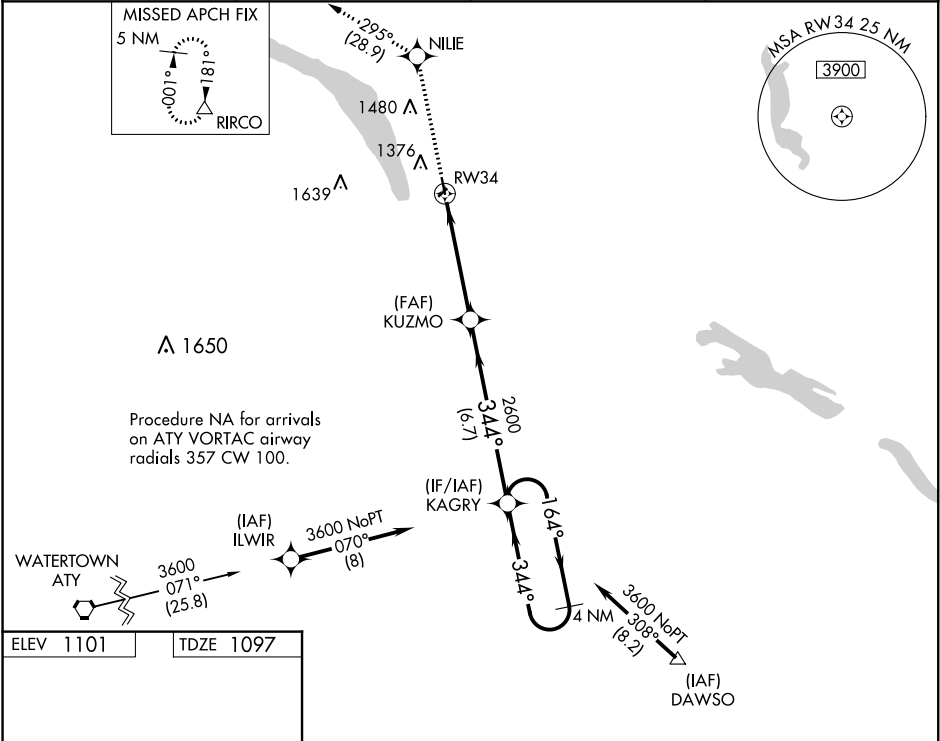
▼

▲

DME/DME RNP-0.3 NA. Visibility reduction by helicopters NA. Procedure NA at night. When local altimeter setting not received, use Appleton altimeter setting and increase all MDA 60 feet, increase LP and LNAV Cat C visibility to 1½ mile and Circling Cat C visibility to 2 miles.

MISSED APPROACH:
Climb to 4500 direct
NILIE and on track 295°
to RIRCO and hold.

AWOS-3 119.225	MINNEAPOLIS CENTER 128.5 306.2	GCO 121.725	UNICOM 122.8 (CTAF) 0
-------------------	-----------------------------------	----------------	--------------------------



MIRL Rwy 16-34

4500	NILIE	tr 295°	RIRCO	4 NM	KAGRY	Holding Pattern
------	-------	---------	-------	------	-------	-----------------