

WAAS CH 56526 W09A	APP CRS 091°	Rwy Idg 5010 TDZE 778 Apt Elev 778
--	------------------------	---

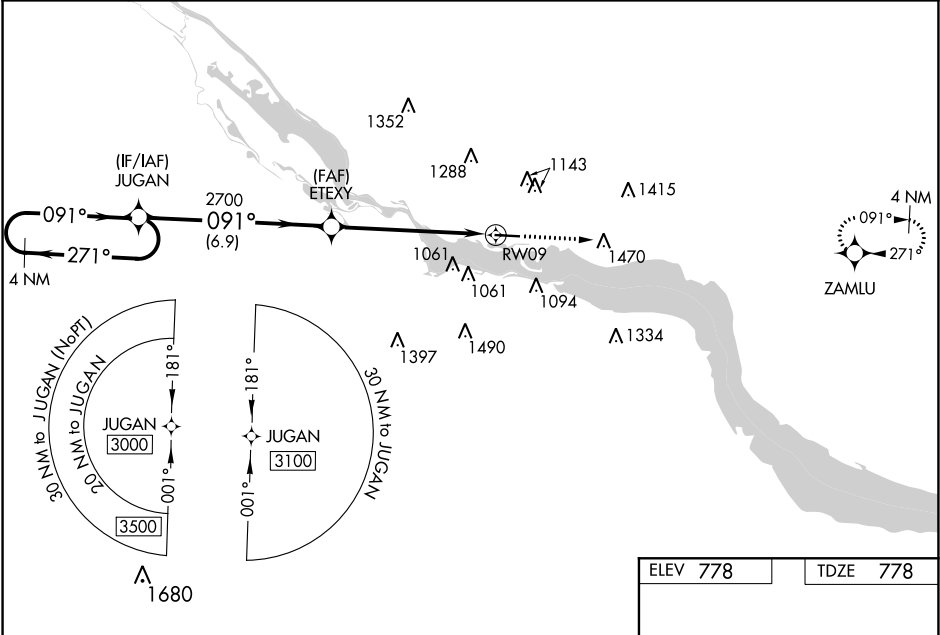
RNAV (GPS) RWY 9
RED WING RGNL (RGK)

⚠ Baro-VNAV NA when using South St. Paul altimeter setting. For uncompensated Baro-VNAV systems, LNAV/VNAV NA below -16°C (4°F) or above 38°C (100°F). DME/DME RNP-0.3 NA. VDP NA with South St. Paul altimeter setting. When local altimeter setting not received, use South St. Paul altimeter setting and increase all DA 72 feet and all MDA 80 feet; increase LNAV/VNAV visibility $\frac{3}{8}$ mile all Cats, LNAV and Circling Cat B/C/D visibility $\frac{1}{4}$ mile. For inop MALSR, increase LNAV Cat C/D visibility $\frac{3}{8}$ mile. For inop MALSR when using South St. Paul altimeter setting, increase LPV visibility $\frac{3}{8}$ mile all Cats, LNAV/VNAV all Cats and LNAV Cat C/D visibility $\frac{3}{4}$ mile.

MALSR

MISSED APPROACH:
Climb to 3000 direct ZAMLU and hold.

AWOS-3 119.25	MINNEAPOLIS APP CON 121.2 335.65	UNICOM 123.05 (CTAF) 0
-------------------------	--	----------------------------------



4 NM Holding Pattern JUGAN

GP 3.00° TCH 50

ETEXY 2700

RW09

CATEGORY	A	B	C	D
LPV DA		978- $\frac{1}{2}$	200 (200- $\frac{1}{2}$)	
LNAV/VNAV DA		1160- $\frac{3}{4}$	382 (400- $\frac{3}{4}$)	
LNAV MDA	1260- $\frac{1}{2}$	482 (500- $\frac{1}{2}$)	1260-1	482 (500-1)
CIRCLING	1480-1 702 (800-1)	1520-1 742 (800-1)	1540-2 $\frac{1}{4}$ 762 (800-2 $\frac{1}{4}$)	1540-2 $\frac{1}{2}$ 762 (800-2 $\frac{1}{2}$)

ELEV 778

TDZE 778

3000 ZAMLU

HIRL Rwy 9-27 0

NC-1, 31 DEC 2020 to 28 JAN 2021

NC-1, 31 DEC 2020 to 28 JAN 2021