

WAAS CH 65918 W31A	APP CRS 307°	Rwy Idg 4202 TDZE 1394 Apt Elev 1402
--	------------------------	---

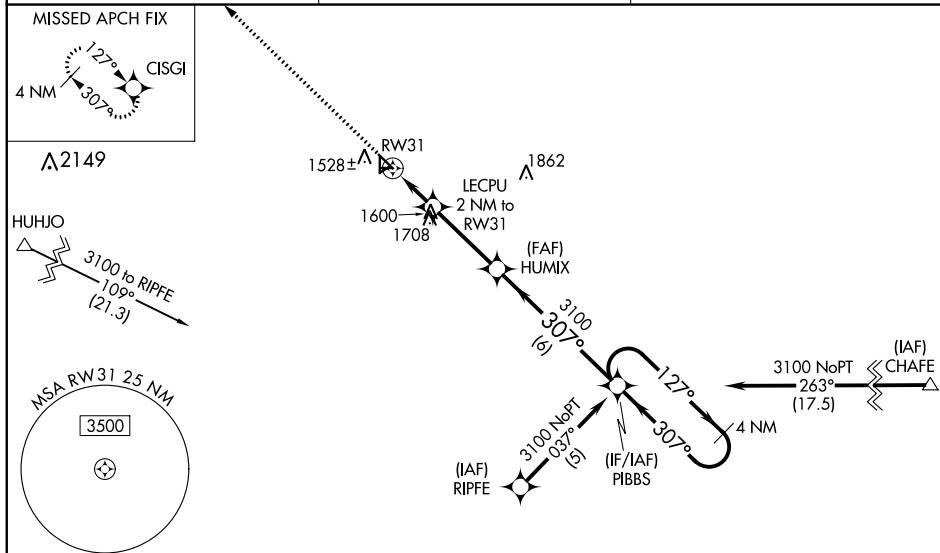
RNAV (GPS) RWY 31
BARNES COUNTY MUNI (BAC)

RNP APCH.

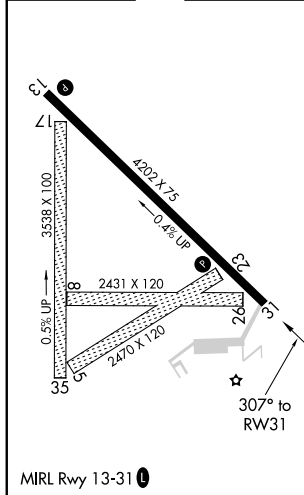
T Baro-VNAV NA when using Jamestown altimeter setting. For uncompensated Baro-VNAV systems, LNAV/VNAV NA below -17°C or above 54°C. When local altimeter setting not received, use Jamestown altimeter setting and increase LPV DA 77 feet and LNAV/VNAV DA 227 feet, and all MDA 80 feet; increase LPV all Cats visibility $\frac{1}{4}$ mile, LNAV/VNAV all Cats visibility $\frac{3}{4}$ mile and increase Circling Cat C visibility $\frac{1}{2}$ mile. Circling NA to Rwys 5, 8, 17, 23, 26, and 35. Rwy 31 helicopter visibility reduction below $\frac{3}{4}$ SM NA.

MISSED APPROACH: Climb to 3000 direct C/SG and hold.

AWOS-3 118.725	MINNEAPOLIS CENTER 124.2 270.3	UNICOM 122.8 (CTAF) 0
--------------------------	--	--



ELEV 1402	TDZE 1394
-----------	-----------



3000
↑
CISGI

VGS and RNAV glidepath not coincident
(VGS Angle 3.00/TCH 28).

HUMIX
3100

PIBBS

4 NM
Holding Pattern

*LNAV only

LECPU
2 NM to
RW31

307°

127°

3100

307°

2040*

RW31

GP 3.00°
TCH 40

2 NM 3.2 NM 6 NM

CATEGORY	A	B	C	D
LPV DA	1644-1	250 (300-1)		NA
LNAV/ VNAV	1717-1¼	323 (400-1¼)		NA
LNAV MDA	1900-1	506 (500-1)	1900-1½ 506 (500-1½)	NA
CIRCLING	1920-1 518 (600-1)	2000-1 598 (600-1)	2000-1½ 598 (600-1½)	NA

RNAV (GPS) RWY 31