

WAAS CH 72836 W12A	APP CRS 123°	Rwy Idg TDZE 1147 Apt Elev 1147
--	------------------------	---

RNAV (GPS) RWY 12

HAROLD DAVIDSON FIELD (VMR)

RNP APCH.

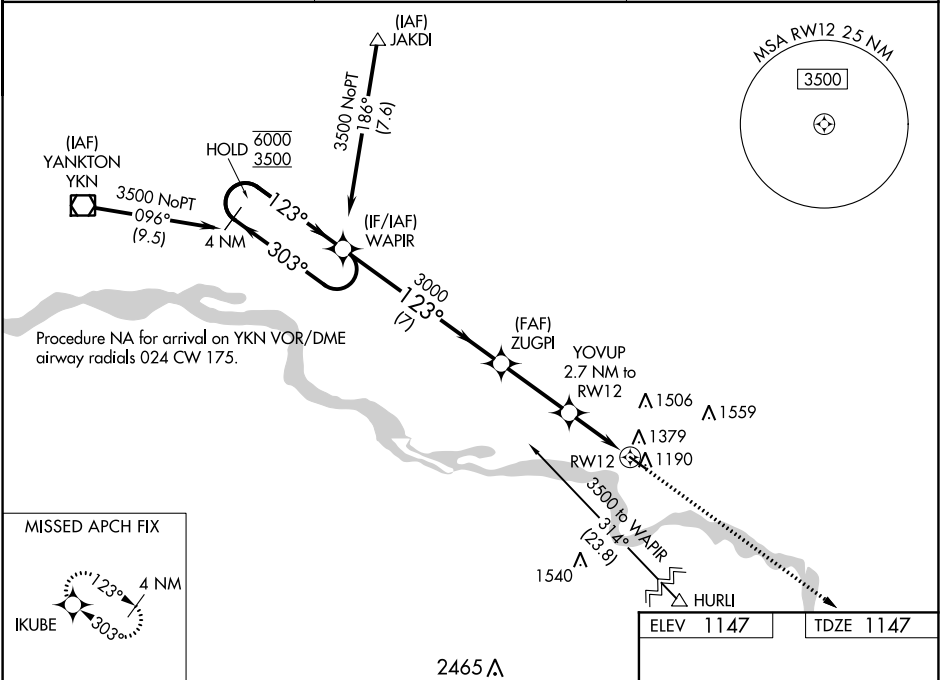
▼

▲ NA

Baro-VNAV NA.
Use Yankton altimeter setting.

MISSED APPROACH:
Climb to 3500 direct
IKUBE and hold.

YKN AWOS-3PT 119.05	SIOUX CITY APP CON ★ 124.6 307.0	AUNICOM 122.8 (CTAF) 0
-------------------------------	--	----------------------------------



4 NM Holding Pattern				
WAPIR				
6000 ← 303°				
3500 → 123°				
GP 3.00°				
TCH 38				
ZUGPI				
3000				
YOYUP 2.7 NM to RWY12				
RWY12				
*2040				
7 NM 3 NM 2.7 NM				
CATEGORY	A	B	C	D
LPV DA	1470-1 323 (400-1)			NA
LNAV/VNAV DA	1659-1½ 512 (600-1½)			NA
LNAV MDA	1700-1	553 (600-1)	1700-1⅝ 553 (600-1⅝)	NA
CIRCLING	1760-1	613 (700-1)	1900-2¼ 753 (800-2¼)	NA

