

WAAS CH <b>78431</b> <b>W29A</b>	APP CRS <b>299°</b>	Rwy Idg TDZE Apt Elev	<b>4499</b> <b>2573</b> <b>2573</b>
--	------------------------	-----------------------------	---

RNAV (GPS) RWY 29

LEMMON MUNI (LEM)

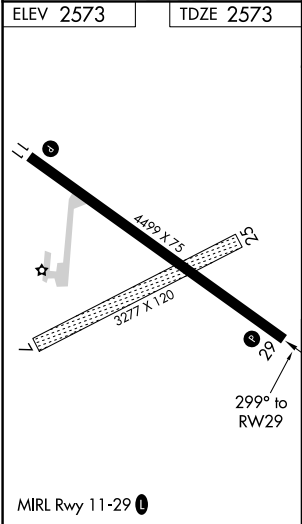
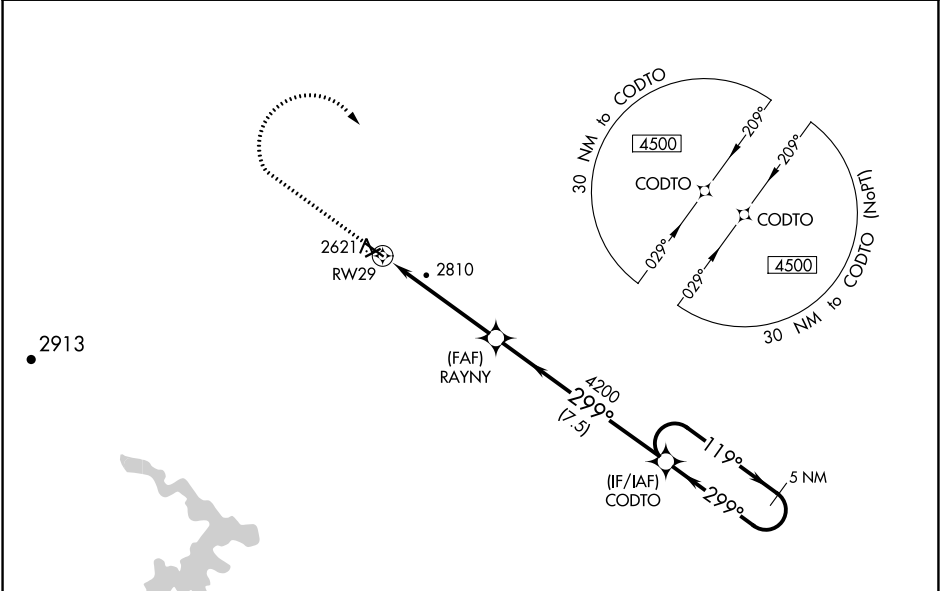
⚠


NA

For uncompensated Baro-VNAV systems, LNAV/VNAV NA below -20°C (-4°F) or above 54°C (130°F). DME/DME RNP-0.3 NA. Baro-VNAV and VDP NA when using Hettinger altimeter setting. Helicopter visibility reduction below ¾ SM NA. When local altimeter setting not received, use Hettinger altimeter setting and increase all DA 74 feet and all MDA 80 feet and increase LPV and LNAV/VNAV all Cats visibility ⅓ mile and LNAV Cats C/D and Circling Cats C/D visibility ¼ mile.

MISSED APPROACH: Climb to 3300 then climbing right turn to 4500 direct CODTO and hold.

MINNEAPOLIS CENTER <b>124.25 236.825</b>	AUNICOM <b>122.8 (CTAF)</b> 
---	--



3300	4500	CODTO	VGSI and RNAV glidepath not coincident (VGSI Angle 3.00/TCH 27).	
*LNAV only.		RAYNY	CODTO	5 NM Holding Pattern
*1.5 NM to RW29		4200	299°	119°
1.5 NM		3.5 NM	7.5 NM	4500
RW29		4200	299°	GP 3.00°
1.5 NM		3.5 NM	7.5 NM	TCH 40
CATEGORY	A	B	C	D
LPV DA	2823-1 250 (300-1)			
LNAV/VNAV DA	2831-1 258 (300-1)			
LNAV MDA	3060-1	487 (500-1)	3060-1⅜	487 (500-1⅜)
 CIRCLING	3220-1	647 (700-1)	3280-2 707 (800-2)	3280-2¼ 707 (800-2¼)