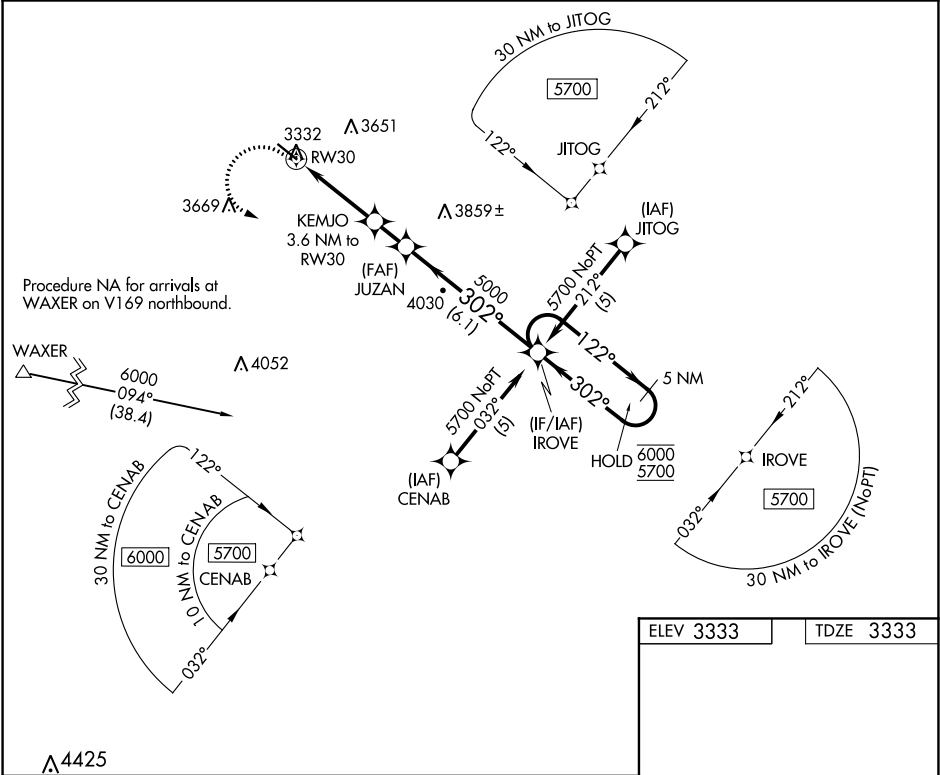


APP CRS 302°	Rwy Idg 5000
TDZE 3333	Apt Elev 3333

RNAV (GPS) RWY 30
PINE RIDGE (IEN)

RNP APCH.	MISSED APPROACH: Climbing left turn to 5700 direct IROVE and hold.
Rwy 30 helicopter visibility reduction below ¾ SM NA.	
-33°C/-27°F	

ASOS 126.775	DENVER CENTER 127.95 338.2	CTAF 122.9 0
------------------------	--------------------------------------	------------------------



5700		IROVE		VGSi and descent angles not coincident (VGSi Angle 3.00/TCH 28).			
		KEMJO 3.6 NM to RW30		JUZAN		IROVE 5 NM Holding Pattern	
		2.6 NM to RW30		3.04° TCH 40		122° → 6000 ← 302° 5700	
		RW30		302°			
		4540		5000			
		2.6 NM		1 NM		6.1 NM	
CATEGORY		A		B		C D	
LNAV MDA		4180-1 847 (900-1)		4180-1¼ 847 (900-1¼)		NA	
CIRCLING		4180-1 847 (900-1)		4180-1¼ 847 (900-1¼)		NA	

ELEV 3333	TDZE 3333
MIRL Rwy 12-30 0	