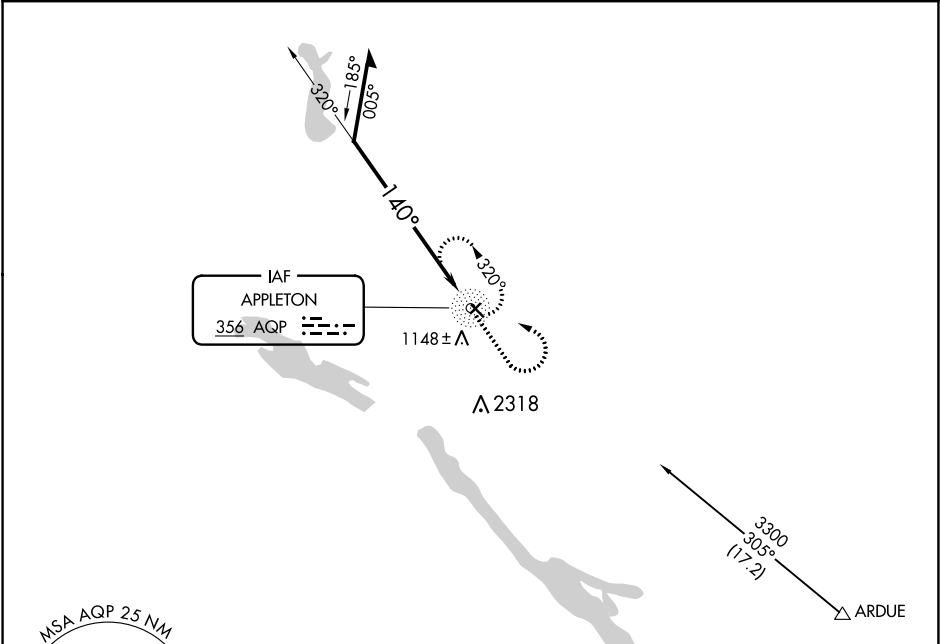


| | | | | | |
|---------|-----|----------|------|---------|------|
| NDB AQP | 356 | APP CRS | 140° | Rwy Idg | 3500 |
| | | TDZE | 1021 | | |
| | | Apt Elev | 1021 | | |

NDB RWY 13
APPLETON MUNI (AQP)

| | |
|--|---|
| <div><div>▼</div><div>▲ NA</div></div> | MISSED APPROACH: Climb to 1900 then climbing left turn to 3300 direct AQP NDB and hold. |
|--|---|

| | | |
|-----------------|-----------------------------------|---------------|
| AWOS-3 118.5 | MINNEAPOLIS CENTER 127.1 290.2 | CTAF 122.9 |
|-----------------|-----------------------------------|---------------|



ELEV 1021

TDZE 1021

140° to AQP NDB

13

2770 X 157

3500 X 75

31

Remain within 10 NM

2900

320°

140°

*AQP NDB

1900

3300

AQP

* Maintain 3300 or above until established outbound for procedure turn.

| CATEGORY | A | B | C | D |
|----------|--------|-------------|-------------------------|----|
| S-13 | 1600-1 | 579 (600-1) | 1600-1½ 579 (600-1½) | NA |
| CIRCLING | 1600-1 | 579 (600-1) | 1600-1½ 579 (600-1½) | NA |

MIRL Rwy 13-31

NC-1, 31 DEC 2020 to 28 JAN 2021

NC-1, 31 DEC 2020 to 28 JAN 2021