

WAAS CH <b>58138</b> <b>W15A</b>	APP CRS <b>148°</b>	Rwy Idg <b>3999</b> TDZE <b>1067</b> Apt Elev <b>1067</b>
----------------------------------------	------------------------	-----------------------------------------------------------------

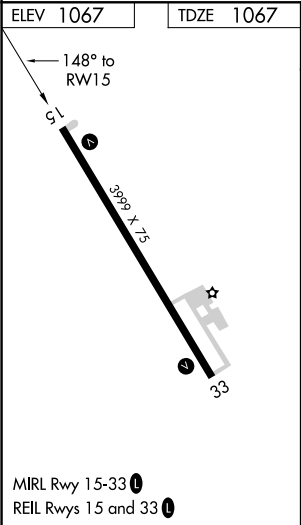
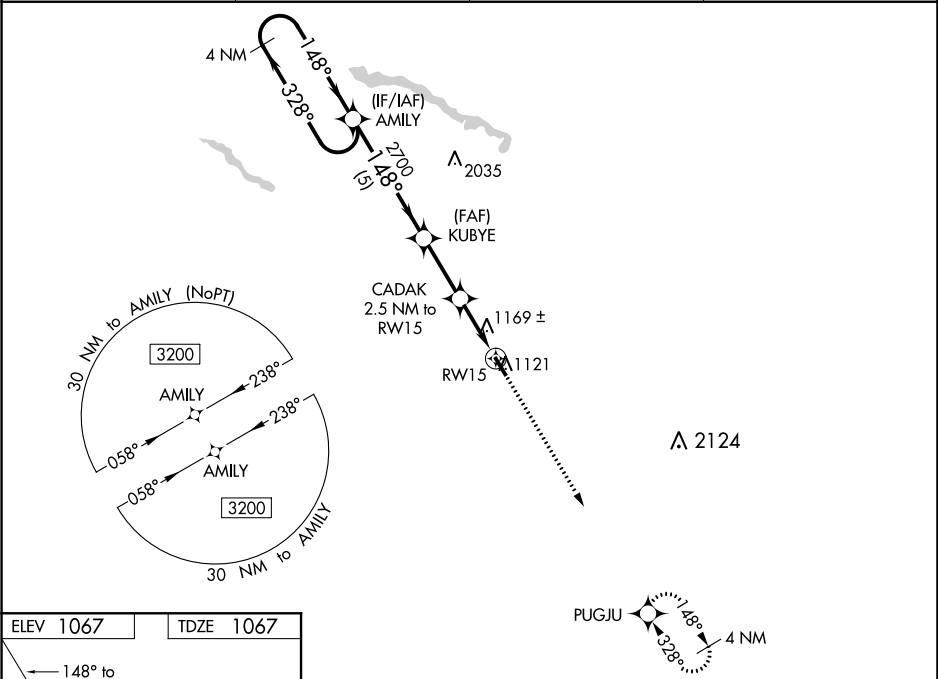
RNAV (GPS) RWY 15

ST JAMES MUNI (JYG)

DME/DME RNP-0.3 NA. For uncompensated Baro-VNAV systems, procedure NA below -17°C (2°F) or above 54°C (130°F). Baro-VNAV and VDP NA when using New Ulm altimeter setting. When local altimeter not received, use New Ulm, MN altimeter setting and increase LPV DA to 1372 feet and LNAV/VNAV DA to 1530 feet, and all MDA 60 feet.

MISSED APPROACH: Climb to 3200 direct PUGJU and hold.

AWOS-3 <b>123.7</b>	MINNEAPOLIS CENTER <b>127.75 257.7</b>	GCO <b>121.725</b>	CTAF <b>122.9 0</b>
------------------------	-------------------------------------------	-----------------------	------------------------



4 NM Holding Pattern				VGSI and descent angles not coincident (VGSI Angle 3.00/TCH 24).				3200	PUGJU
3200				KUBYE				* LNAV only	
GP 3.00°				CADAK				* 1.1 NM to RW15	
TCH 40				RW15				* 1.1 NM to RW15	
5 NM				2.5 NM				1.4	
CATEGORY				A				D	
LPV DA				1317-1				NA	
LNAV/VNAV DA				1475-1 <sup>3</sup> / <sub>8</sub>				NA	
LNAV MDA				1420-1				NA	
CIRCLING				1500-1				NA	
				433 (500-1)					