

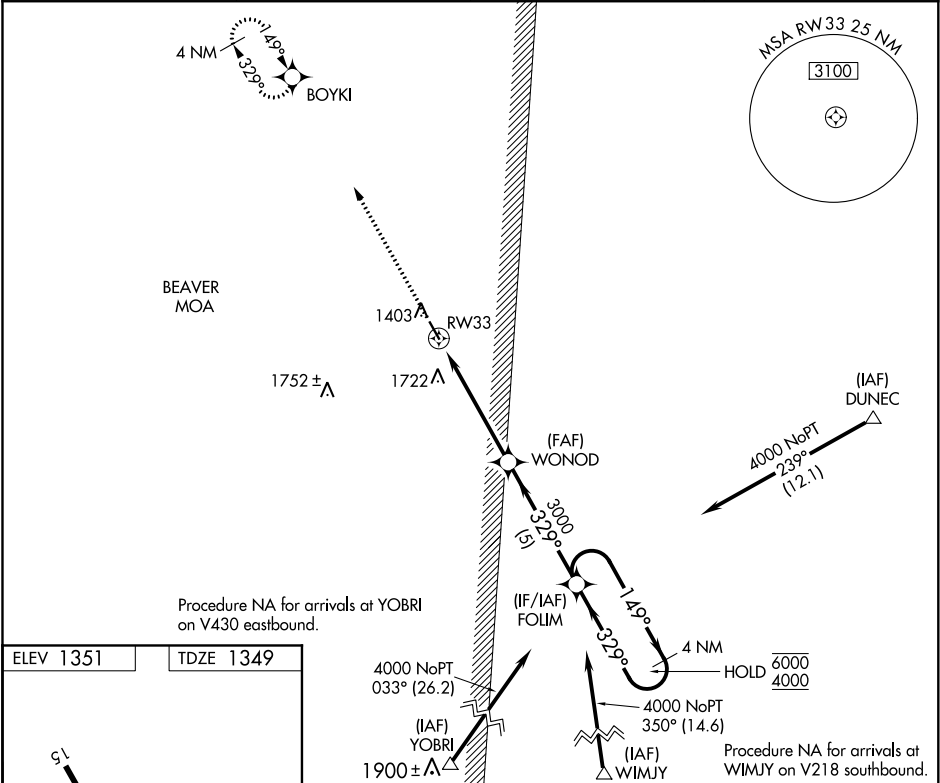
WAAS CH 40226 W33A	APP CRS 329°	Rwy Idg TDZE Apt Elev	3998 1349 1351
--	------------------------	-----------------------------	---

RNAV (GPS) RWY 33

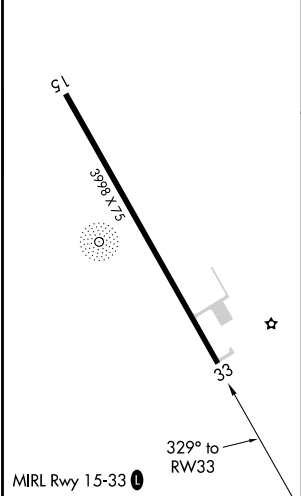
BIGFORK MUNI (F'0Z)

RNP APCH.	MISSED APPROACH: Climb to 4000 direct BOYKI and hold, continue climb-in-hold to 4000.
Rwy 33 helicopter visibility reduction below 3/4 SM NA.	

AWOS-3 345	MINNEAPOLIS CENTER 127.9 281.45	GCO 121.725	CTAF 122.9 0
----------------------	---	-----------------------	------------------------



ELEV 1351	TDZE 1349
-----------	-----------



4000 BOYKI		WONOD		FOLIM		4 NM Holding Pattern
1.5 NM to RW33		1.5 NM to RW33		3.00° TCH 40		149° → 6000
RW33		3.6 NM		5 NM		← 329° 4000
CATEGORY	A	B	C	D		
LP MDA	1860-1	511 (600-1)	NA			
LNAV MDA	1860-1	511 (600-1)	NA			
CIRCLING	1860-1	509 (600-1)	NA			

NC-1, 31 DEC 2020 to 28 JAN 2021

NC-1, 31 DEC 2020 to 28 JAN 2021