

WAAS CH 49020 W34A	APP CRS 339°	Rwy Idg TDZE 926 Apt Elev 926
--	------------------------	---

RNAV (GPS) RWY 34

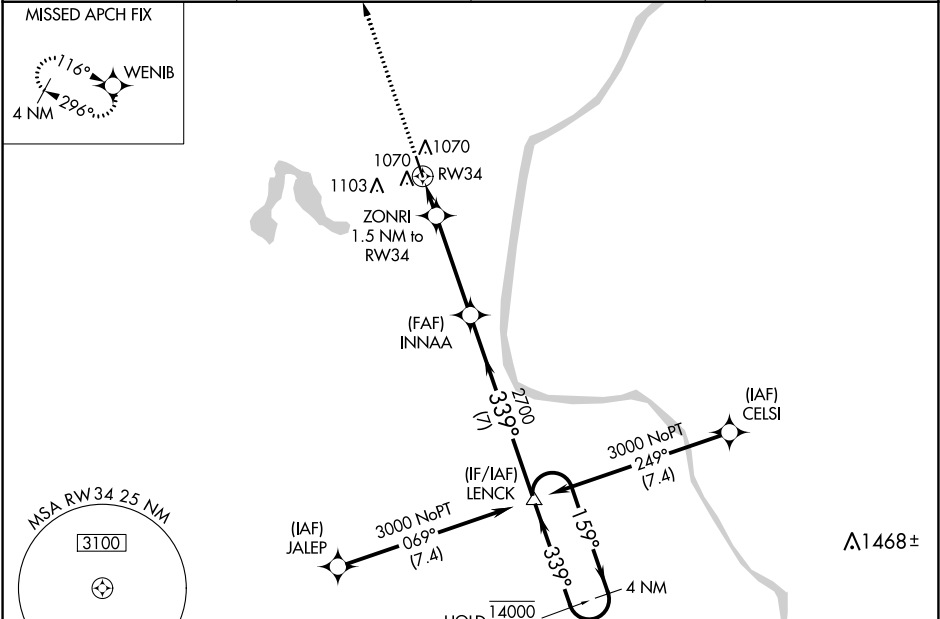
RUSH CITY RGNL (ROS)

RNP APCH.

Circling Rwy 16 NA at night. Rwy 34 helicopter visibility reduction below ¾ SM NA. For uncompensated Baro-VNAV systems, LNAV/VNAV NA below -16°C or above 54°C.

MISSED APPROACH: Climb to 3000 direct WENIB and hold.

AWOS-3 118.8	MINNEAPOLIS CENTER 121.05 397.9	GCO 121.725	CTAF 122.9
------------------------	---	-----------------------	----------------------



3000

↑

WENIB

△

VGSI and RNAV glidepath not coincident
(VGSI Angle 3.00/TCH 25).

4 NM

Holding Pattern

INNAA

2700

LENCK

14000

3000

159°

← 339°

*LNAV only.

ZONRI

1.5 NM to RW34

2700

339°

1440*

2700

RW34

GP 3.12°

TCH 40

1.5 NM

3.8 NM

7 NM

CATEGORY	A	B	C	D
LPV DA	1210-7/8 284 (300-7/8)			NA
LNAV/VNAV DA	1233-7/8 307 (400-7/8)			NA
LNAV MDA	1320-1	394 (400-1)	1320-1 1/8 394 (400-1 1/8)	NA
C CIRCLING	1440-1 514 (600-1)	1460-1 534 (600-1)	1460-1 1/2 534 (600-1 1/2)	NA

ELEV 926

TDZE 926

REIL Rwy 16 and 34

MIRL Rwy 16-34

91

3

401 x 75

34

339° to RW34