

APP CRS	Rwy Idg	3005
356°	TDZE	1623
	Apt Elev	1623

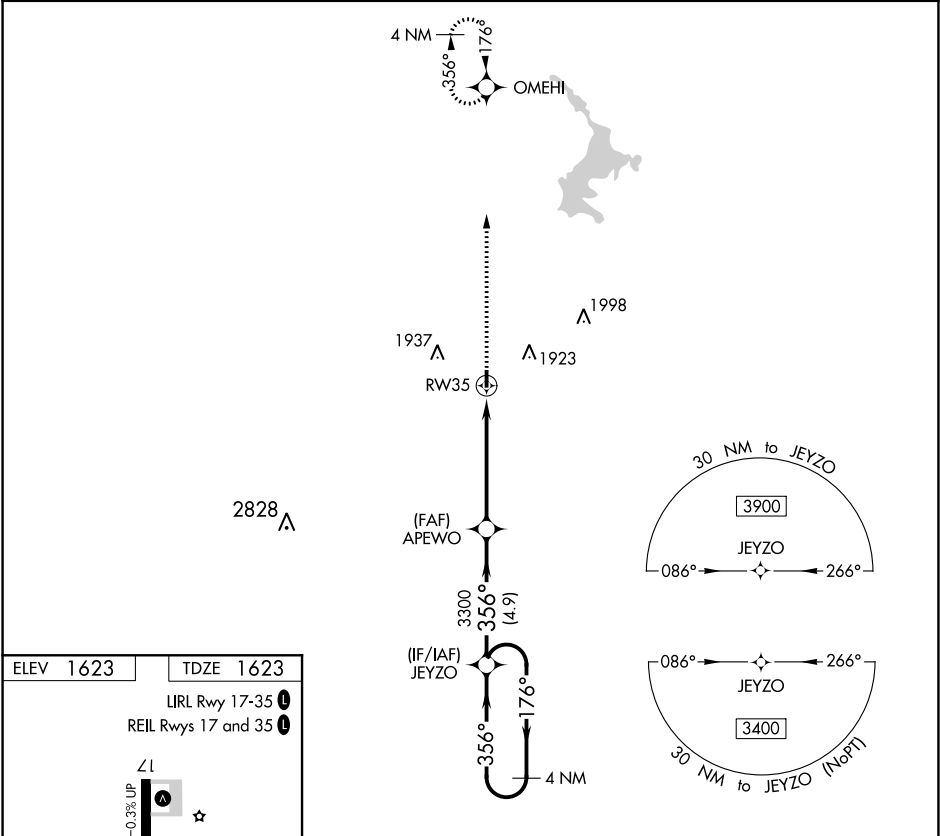
RNAV (GPS) RWY 35
SLAYTON MUNI (DVP)

⚠ When local altimeter setting not received, use Tracy Muni altimeter setting and increase all MDAs 80 feet. DME/DME RNP-0.3 NA. Procedure NA at night.

⚠ Helicopter visibility reduction below 1 SM NA.

MISSED APPROACH: Climb to 3300 direct OMEHI and hold.

AWOS-3 118.55	MINNEAPOLIS CENTER 132.05 317.4	CTAF 122.9 0
------------------	------------------------------------	------------------------



ELEV 1623	TDZE 1623
-----------	-----------

LIRL Rwy 17-35 **0**

REIL Rwys 17 and 35 **0**

35

356° to RW35

3005 X 3000

0.3% UP

35

356° to RW35

3300	OMEHI	VGSI and descent angles not coincident (VGSI Angle 3.00/TCH 21).
------	-------	--

4 NM Holding Pattern

JEYZO

APEWO

3300

356°

176°

3400

356°

5.1 NM

4.9 NM

CATEGORY	A	B	C	D
LNAV MDA	2140-1	517 (600-1)	NA	
C CIRCLING	2140-1	2300-1	NA	
	517 (600-1)	677 (700-1)		

NC-1, 31 DEC 2020 to 28 JAN 2021

NC-1, 31 DEC 2020 to 28 JAN 2021