

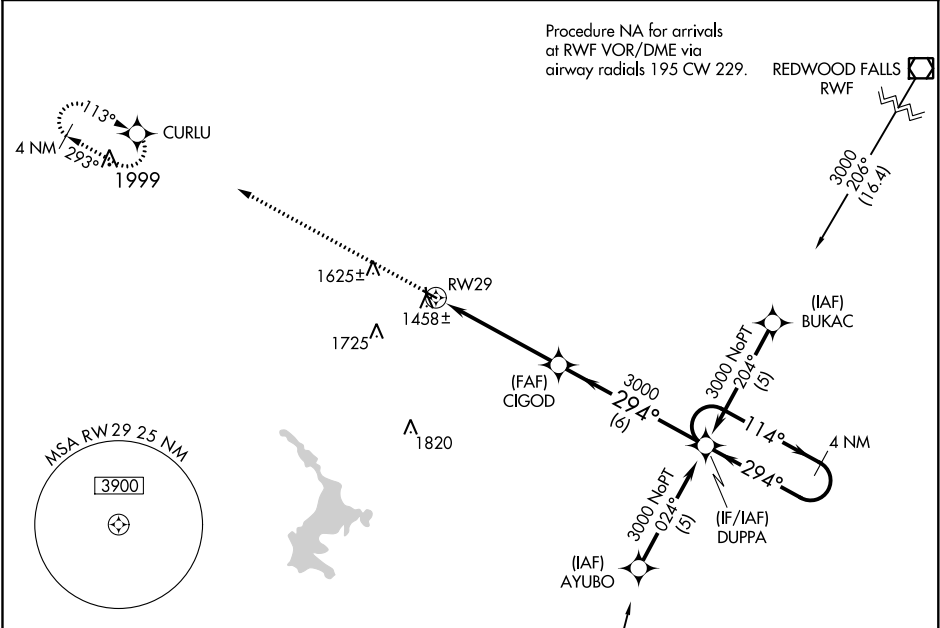
APP CRS	Rwy Idg	3098
294°	TDZE	1335
	Apt Elev	1341

RNAV (GPS) RWY 29

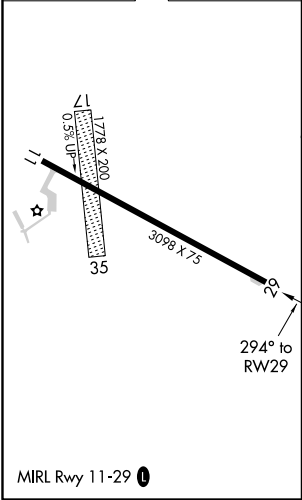
TRACY MUNI (TKC)

RNP APCH.	MISSED APPROACH: Climb to 3200 direct CURLU and hold.
<div><div>▼</div><div>▲ NA</div></div> <div>If local altimeter setting not received, use Marshall/Ryan altimeter setting and increase all MDAs 60 feet. Procedure NA at night. Circling NA to Rwy 17-35.</div>	

AWOS-3 120.0	MINNEAPOLIS CENTER 127.1 290.2	CTAF 122.9 0
-----------------	-----------------------------------	-----------------



ELEV 1341	TDZE 1335
-----------	-----------



3200	CURLU	CIGOD	DUPPA	4 NM Holding Pattern
1.3 NM to RW29	1.3	3.7 NM	6 NM	
3000	294°	114°	3000	
294° to RW29	3.07° TCH 40			
CATEGORY	A	B	C	D
LNAV MDA	1780-1	445 (500-1)	NA	NA
CIRCLING	1920-1	579 (600-1)	NA	NA

NC-1, 31 DEC 2020 to 28 JAN 2021

NC-1, 31 DEC 2020 to 28 JAN 2021