

WAAS  
CH **77718**  
**W30A**

APP CRS  
**298°**

Rwy Idg  
TDZE **1192**  
Apt Elev **1194**

**RNAV (GPS) RWY 30**

MYERS FIELD (CNB)

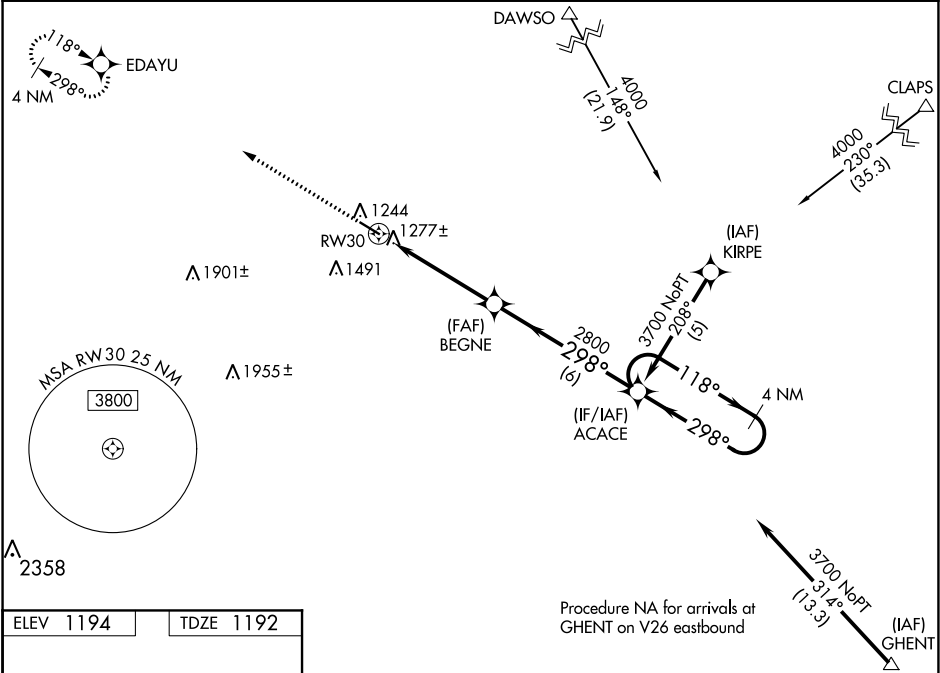
▼

▲

For uncompensated Baro-VNAV systems, LNAV/VNAV NA below -17°C (2°F) or above 46°C (114°F). DME/DME RNP-0.3 NA. Visibility reduction by helicopters NA. Baro-VNAV NA when using Lac Qui Parle County altimeter setting. When local altimeter setting not received, use Lac Qui Parle County altimeter setting and increase all DA 53 feet, and all MDA 60 feet, increase LNAV Cats C and D visibility ¼ mile.

MISSED APPROACH:  
Climb to 3700 direct EDAYU and hold.

AWOS-3 <b>118.575</b>	MINNEAPOLIS CENTER <b>128.5 306.2</b>	CTAF <b>122.9</b>
--------------------------	--	----------------------



ELEV <b>1194</b>	TDZE <b>1192</b>
------------------	------------------

3700

EDAYU

↑

3700

EDAYU

VGSI and RNAV glidepath not coincident  
(VGSI Angle 3.00°/TCH 29).

ACACE

4 NM Holding Pattern

BEGNE

2800

ACACE

2800

118°

298°

3700

GP 3.00°

TCH 40

4.9 NM

6 NM

CATEGORY	A	B	C	D
LPV DA	1442-1 250 (300-1)			
LNAV/VNAV DA	1573-1½ 381 (400-1½)			
LNAV MDA	1680-1 488 (500-1)	1680-1¼ 488 (500-1¼)	1680-1½ 488 (500-1½)	
CIRCLING	1700-1 506 (600-1)	1700-1½ 506 (600-1½)	1800-2 606 (700-2)	