

WAAS CH 65633 W29A	APP CRS 285°	Rwy Idg 3302 TDZE 1183 Apt Elev 1183
--	------------------------	---

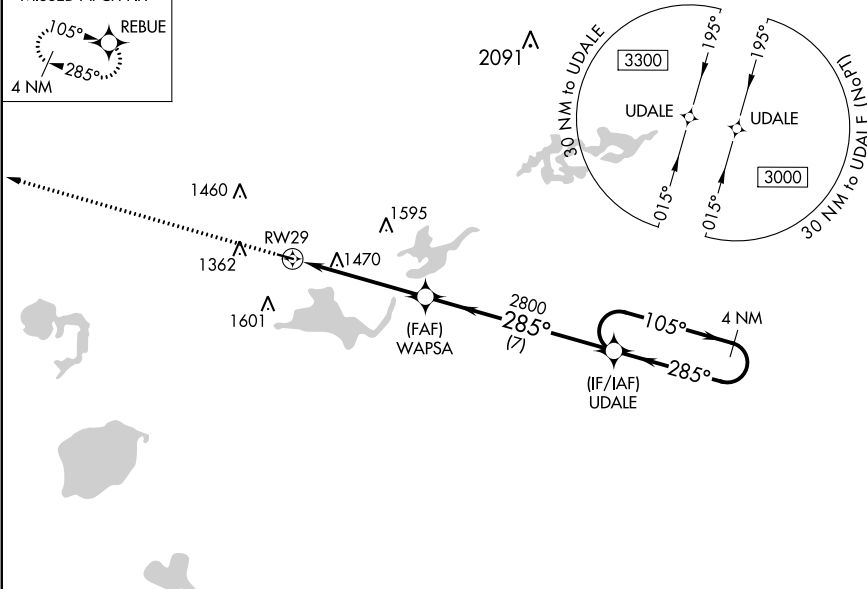
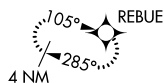
RNAV (GPS) RWY 29
PAYNESVILLE MUNI (PEX)

T Baro-VNAV and VDP NA when using Litchfield altimeter setting. For uncompensated Baro-VNAV systems, LNAV/VNAV NA below -17°C (2°F) or above 54°C (130°F). DME/DME RNP-0.3 NA. Helicopter visibility reduction below ¾ SM NA. When local altimeter not received, use Litchfield altimeter setting and increase all DA 51 feet and all MDA 60 feet; increase LNAV/VNAV all Cats and LNAV and Circling Cat C visibility ¼ mile.

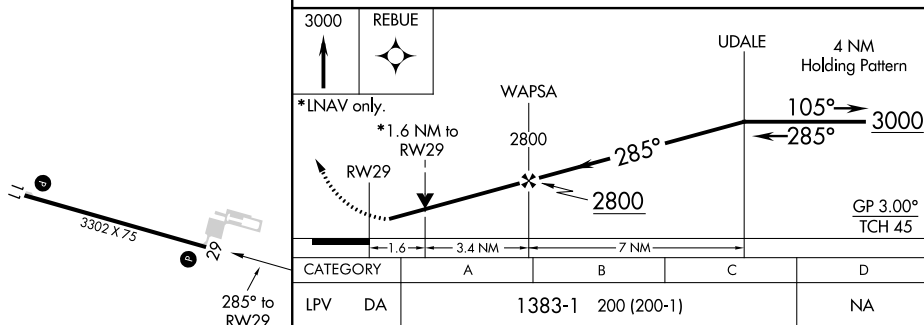
MISSED APPROACH.
Climb to 3000 direct
REBUE and hold.

AWOS-3PT 120.35	MINNEAPOLIS CENTER 125.5 323.1	CTAF 122.90
---------------------------	--	-----------------------

MISSED APCH FIX



ELEV 1183		TDZE 1183
-----------	--	-----------



CATEGORY	A	B	C	D
LPV DA	1383-1 200 (200-1)			NA
RNAV/ VNAV DA	1810-2¼ 627 (700-2¼)			NA
RNAV MDA	1720-1 537 (600-1)	1720-1½ 537 (600-1½)		NA
CIRCLING	1720-1 537 (600-1)	1780-1½ 597 (600-1½)		NA