

WAAS  
CH **40143**  
**W14A**

APP CRS  
**140°**

Rwy Idg  
TDZE  
Apt Elev  
**7501**  
**2316**  
**2353**

**RNAV (GPS) RWY 14**

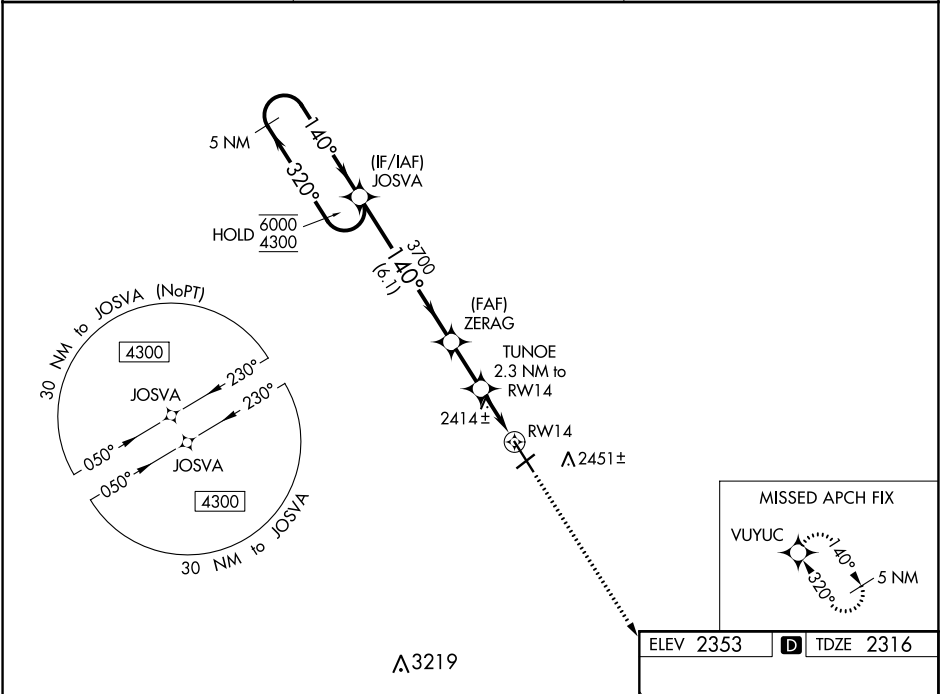
WILLISTON BASIN INTL (XWA)

RNP APCH.

For uncompensated Baro-VNAV systems, LNAV/VNAV NA below -19°C or above 54°C.

MISSED APPROACH: Climb to 4300 direct VUYUC and hold.

ASOS <b>125.925</b>	SALT LAKE CITY CENTER <b>126.85 305.2</b>	UNICOM <b>122.8 (CTAF) 0</b>
------------------------	--	---------------------------------



5 NM Holding Pattern

6000

4300

GP 3.00°  
TCH 50

JOSVA

ZERAG

TUNOE

RW14

320°

140°

140°

3700

3060

1 NM

6.1 NM

2 NM

1.3 NM

1 NM

4300

VUYUC

\*LNAV only

\*1 NM to RW14

CATEGORY	A	B	C	D
LPV DA		2516-¾	200 (200-¾)	
LNAV/VNAV DA		2577-7/8	261 (300-7/8)	
LNAV MDA		2680-1	364 (400-1)	
CIRCLING	2760-1 407 (500-1)	2820-1 467 (500-1)	2820-1½ 467 (500-1½)	2920-2 567 (600-2)

REIL Rwy 14 0

MIRL Rwy 4-22 0

HIRL Rwy 14-32 0