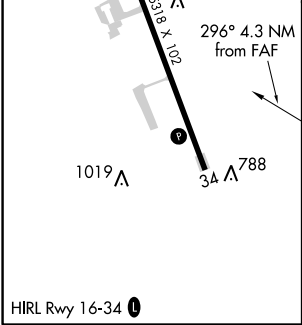
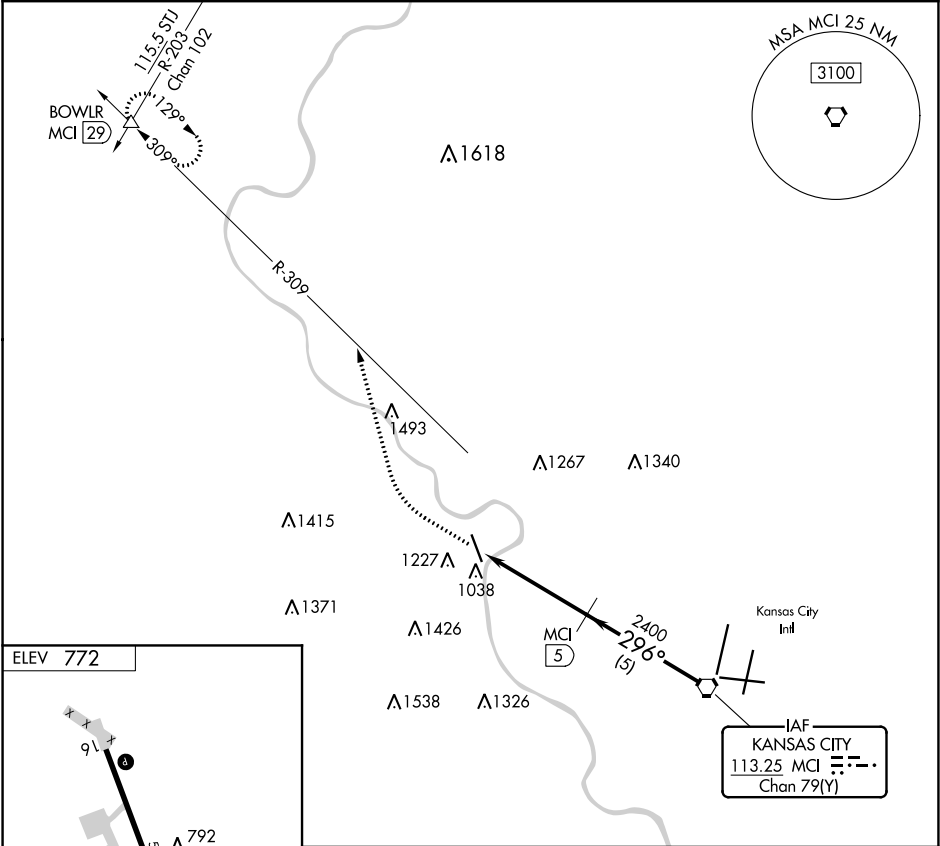


VORTAC MCI	APP CRS	Rwy Idg	N/A
<b>113.25</b>	<b>296°</b>	TDZE	N/A
Chan <b>79(Y)</b>		Apt Elev	<b>772</b>

VOR/DME-A  
SHERMAN AAF (F<sup>L</sup>V)

<div><div><div><div></div><div>NA</div></div></div><div>Use Kansas City Intl altimeter setting. Circling NA west of Rwy 16-34.</div></div> <div>MISSED APPROACH: Climbing right turn to 3000 via heading 340° and MCI R-309 to BOWLR INT and hold.</div>
--

KANSAS CITY APP CON <b>124.7 284.7</b>	CTAF <b>126.20</b>
---	-----------------------



3000	MCI R-309	BOWLR	MCI VORTAC
hdg 340°			
MCI 5			
MCI 9.3			
2400			
296°			
4000			
Procedure Turn NA			
4.3 NM			
5 NM			
CATEGORY	A	B	C
CIRCLING	1440-1	668 (700-1)	1440-1 3/4 668 (700-1 3/4)