

RNAV (GPS) RWY 4

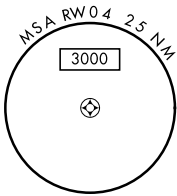
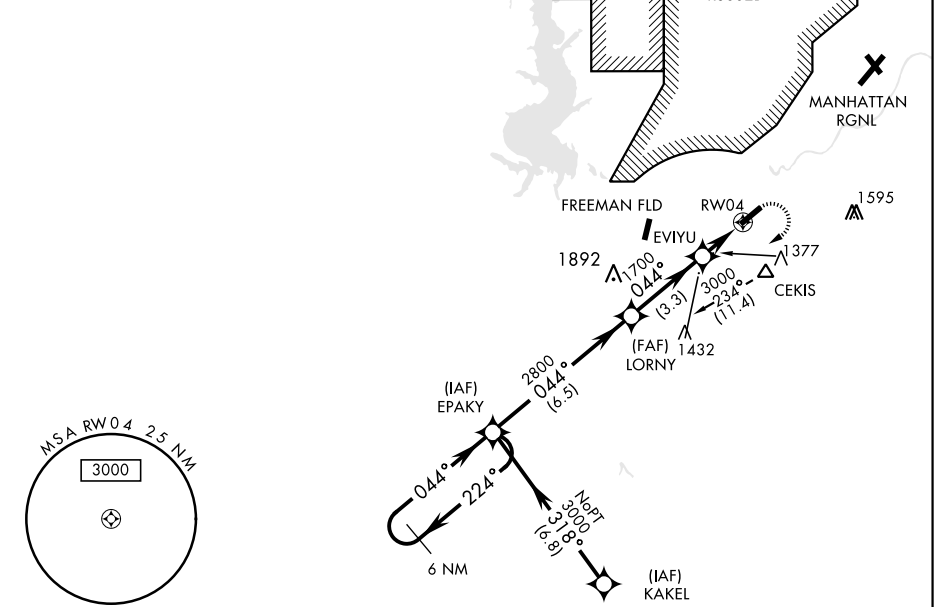
APCH CRS	Rwy Idg
044°	4503
TDZE	1066
Arpt Elev	1066

AL-155 [USA]

MARSHALL AAF (KFRI)

* Circling not authorized NW of Rwy 4-22.		MISSED APPROACH: Climbing right turn to 3000 direct EPAKY and hold.
NA Visibility reduction by helicopters NA		
ATIS ★ 121.025	MARSHALL GCA 121.25 254.35	MARSHALL TOWER ★ 126.2 (CTAF) 0 248.65
	GND CON 140.20 229.4	CLNC DEL 119.65
		ASR/PAR

DME/DME RNP -0.3 NA
Procedure NA for arrival at
CEKIS via V4-508 eastbound.



3000					ELEV 1066	TDZE 1066
CATEGORY	A	B	C	D	044° from LORNY	
LNNAV MDA	1640-1	574 (600-1)	1640-1½ 574 (600-1½)	1640-1¾ 574 (600-1¾)	HIRL Rwy 4-22	
CIRCLING *	1660-1 594 (600-1)	1680-1 614 (700-1)	1680-1¾ 614 (700-1¾)	1760-2¼ 694 (700-2¼)		

RNAV (GPS) RWY 4

NC-2, 31 DEC 2020 to 28 JAN 2021

NC-2, 31 DEC 2020 to 28 JAN 2021