
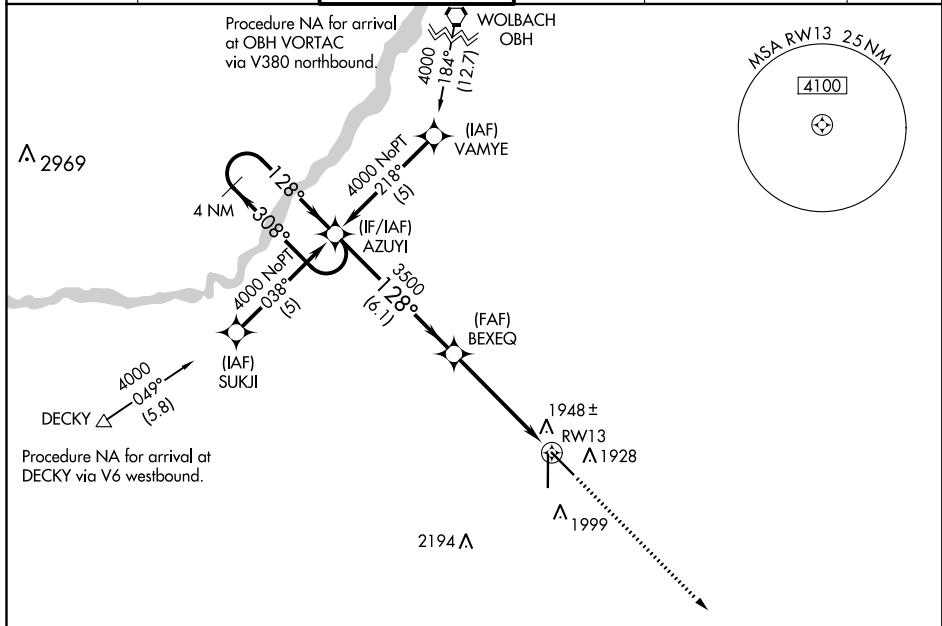


WAAS CH <b>53399</b> <b>W13A</b>	APP CRS <b>128°</b>	Rwy Idg <b>6608</b> TDZE <b>1842</b> Apt Elev <b>1847</b>
--	------------------------	---

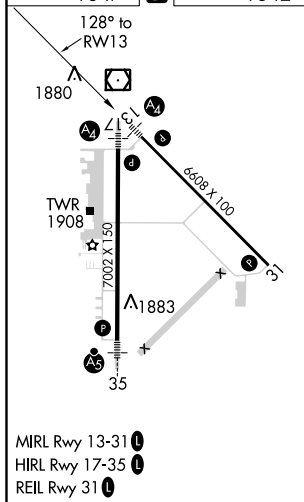
RNAV (GPS) RWY 13  
CENTRAL NEBRASKA RGNL (GRI)

<div style="display: flex; flex-direction: column; align-items: center;"> <div style="border: 1px solid black; padding: 2px; margin-bottom: 5px;">T</div> <div style="border: 1px solid black; padding: 2px;">A</div> </div>	<p>DME/DME RNP-0.3 NA. Baro-VNAV NA below -18°C (0°F). If local altimeter setting not received, use Aurora altimeter setting and increase all DAs/MDAs 60 feet. Baro-VNAV and VDP NA when using Aurora altimeter setting. Inop table does not apply to LPV and LNAV/VNAV.</p>	<div style="display: flex; flex-direction: column; align-items: center;"> <div>MALS</div> <div style="margin-top: 10px;">  </div> </div>	<p>MISSED APPROACH: Climb to 4100 direct AGEKY and hold.</p>
--	---	---	--

ATIS 127.4	MINNEAPOLIS CENTER 119.4 278.8	GRAND ISLAND TOWER* 118.2 (CTAF) 0 259.3	GND CON 121.9 259.3	CLNC DEL 121.9 (when tower closed)	UNICOM 122.95
---------------	-----------------------------------	---	------------------------	--	------------------



ELEV 1847	<b>D</b>	TDZE 1842
-----------	----------	-----------



The diagram illustrates the RNAV (RNP) approach for RW13. It shows a holding pattern at 4000 feet with a 308° inbound and 128° outbound. The glidepath is not coincident with the VGS1 angle of 3.00/TCH 35°. Key altitudes include 4100 feet for the final approach and 3500 feet for the glidepath. Distances are marked as 6.1 NM, 4 NM, and 1 NM. The diagram also shows the AGEKY and AZUYI waypoints and the RW13 runway.