

APP CRS	Rwy Idg	<b>6608</b>
<b>308°</b>	TDZE	<b>1844</b>
	Apt Elev	<b>1847</b>

RNAV (GPS) RWY 31  
CENTRAL NEBRASKA RGNL (GRI)

**T** DME/DME RNP-0.3 NA. If local altimeter setting not received, use Aurora  
**A** altimeter setting and increase all MDAs 60 feet. VDP NA when using Aurora  
altimeter setting.

**MISSED APPROACH:** Climb to 4000  
direct AZUYI and hold.

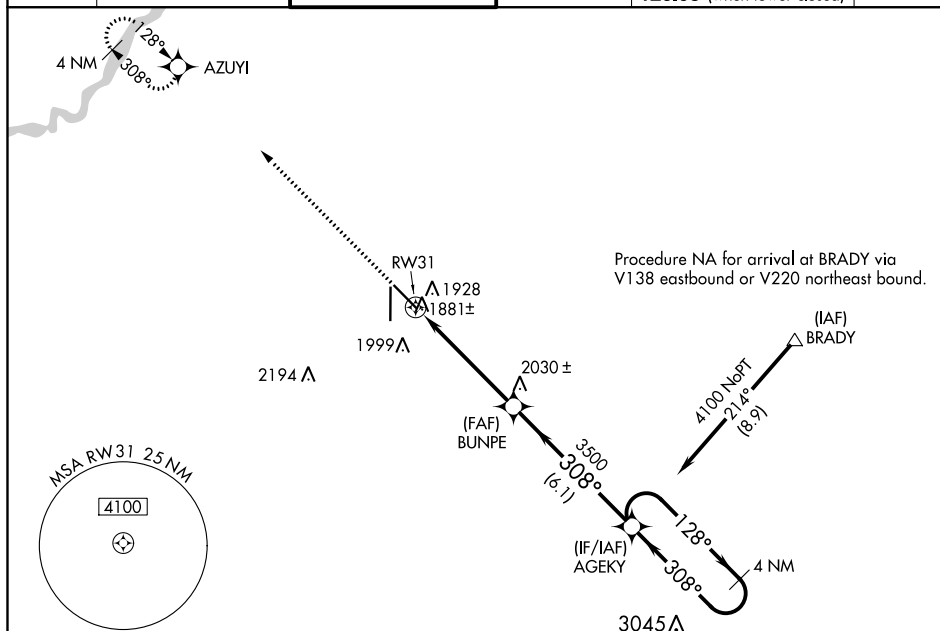
ATIS  
127.4

MINNEAPOLIS CENTER  
119.4 278.8

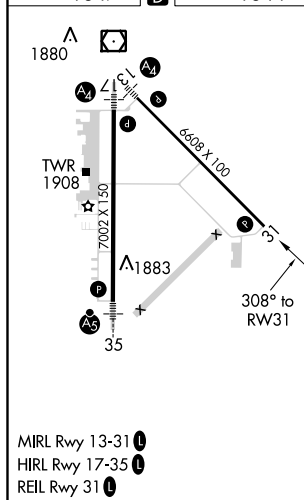
GRAND ISLAND TOWER ★  
118.2 (CTAF)  259.3

GND CON  
121.9 259.3

CLNC DEL  
**121.9**  
**126.05** (when tower closed)

UNICOM  
122.95

ELEV	1847		TDZE	1844
------	------	---	------	------



(IAF)  
HASTINGS  
HSI

4100 MFT  
038°  
(19.6)

Procedure NA for arrival at HSI VOR/DME  
on airway radials 006 CW 096.

4000 ↑	AZUYI 		
-----------	-----------	--	--

BUNPE

AGEKY

4 NM  
Holding Pattern

128° →  
← 308°

4100

0.9 NM to  
RW31

RW31

3.04°  
TCH 42

308°

3500

0.9      4.1 NM      6.1 NM

CATEGORY	A	B	C	D
LNAV MDA	2180-1    336 (400-1)			
CIRCLING	2300-1    453 (500-1)	2300-1½ 453 (500-1½)	2400-2 553 (600-2)	