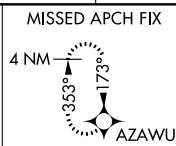
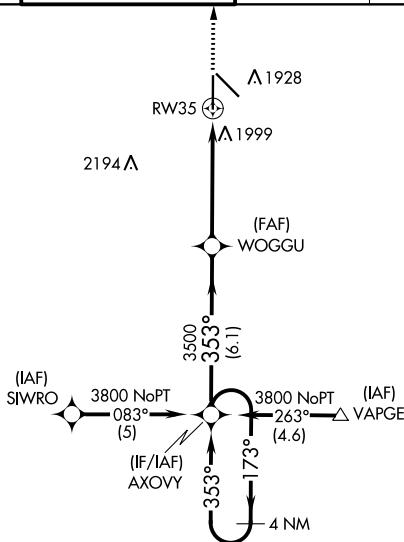
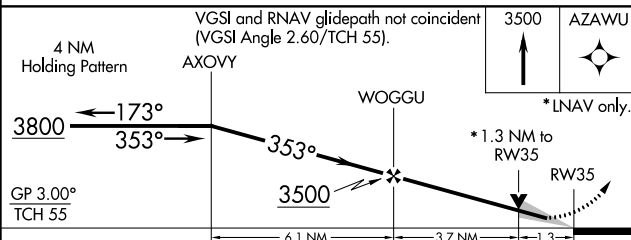


RNAV (GPS) RWY 35
CENTRAL NEBRASKA RGNL (GRI)

- MISSED APPROACH.**
Climb to 3500 direct
AZAWU and hold.



Procedure NA for arrival
at HSI VOR/DME on
airway radials 006 CW 068.



CATEGORY	A	B	C	D
LPV DA	2097/24 250 (300-½)			
RNAV/ VNAV	2283/50 436 (500-1)			
RNAV MDA	2260/24 413 (500-½)	2260/40 413 (500-¾)	2260/50 413 (500-1)	
CIRCLING	2300-1½ 453 (500-1½)			2400-2 553 (600-2)