

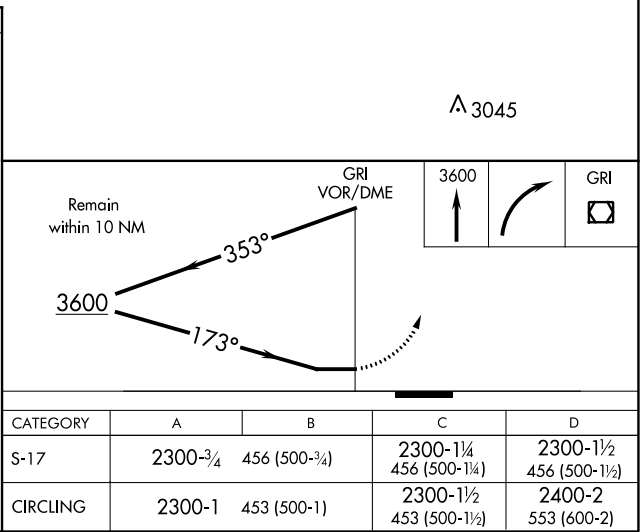
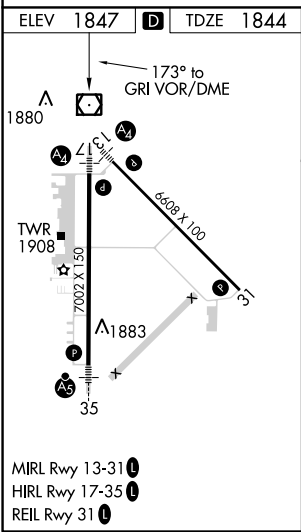
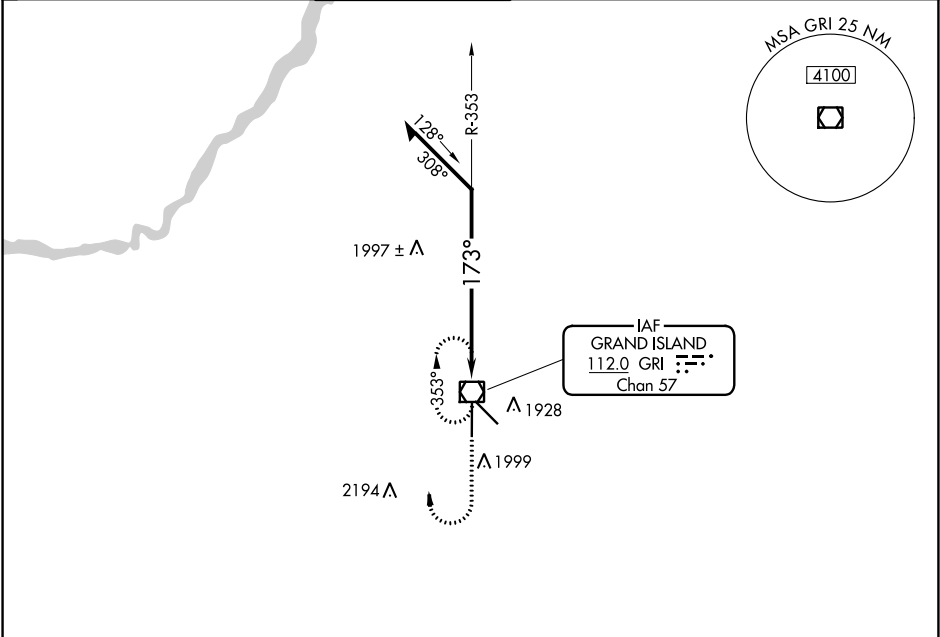


VOR/DME GRI	APP CRS	Rwy Idg	7002
112.0	173°	TDZE	1844
Chan 57		Apt Elev	1847

VOR RWY 17  
CENTRAL NEBRASKA RGNL (GRI)

 When local altimeter setting not received, use Aurora altimeter setting and increase all MDA 60 feet, and increase S-17 Cat C and D visibility ¼ mile. Inop table does not apply to S-17 Cat C.	MALS 	MISSED APPROACH: Climb to 3600, then right turn direct GRI VOR/DME and hold.			
ATIS 127.4	MINNEAPOLIS CENTER 119.4 278.8	GRAND ISLAND TOWER* 118.2 (CTAF) 0 259.3	GND CON 121.9 259.3	CLNC DEL 121.9 126.05 (when tower closed)	UNICOM 122.95



NC-2, 31 DEC 2020 to 28 JAN 2021

NC-2, 31 DEC 2020 to 28 JAN 2021