

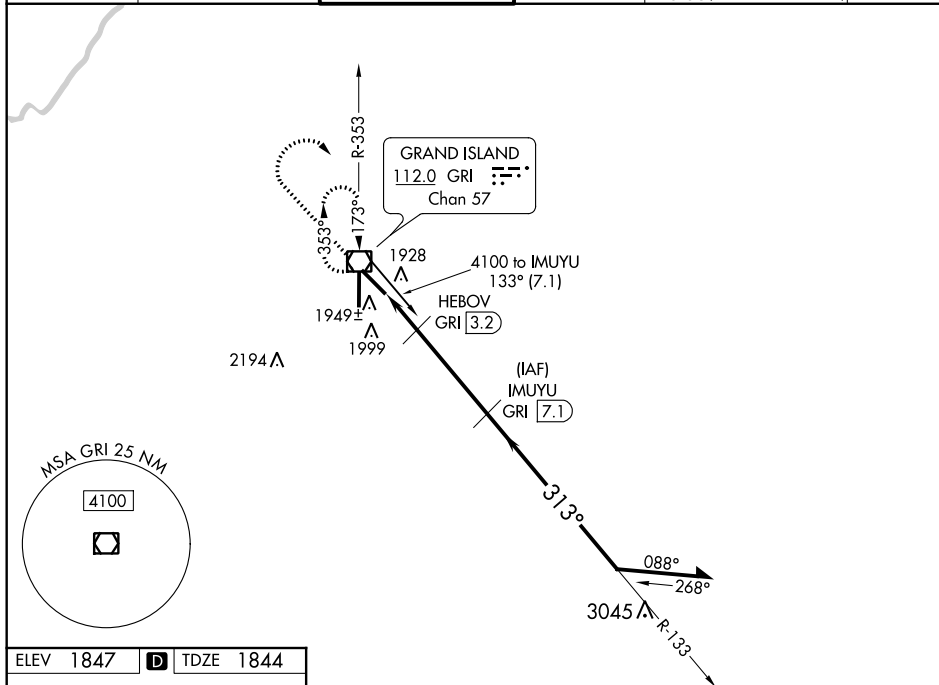
VOR/DME GRI <b>112.0</b> Chan <b>57</b>	APP CRS <b>313°</b>	Rwy Idg <b>6608</b> TDZE <b>1844</b> Apt Elev <b>1847</b>
---	------------------------	---

VOR/DME RWY 31  
CENTRAL NEBRASKA RGNL (GRI)

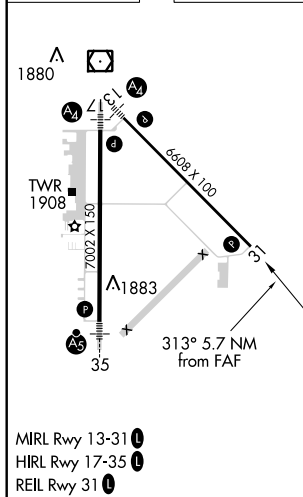
**T** If local altimeter setting not received, use Aurora altimeter setting and increase all MDAs 60 feet.  
**A** VDP NA when using Aurora altimeter setting.


**MISSED APPROACH:** Climb to 2900 then climbing right turn to 3700 direct GRI VOR/DME and hold.

ATIS 127.4	MINNEAPOLIS CENTER 119.4 278.8	GRAND ISLAND TOWER★ 118.2 (CTAF) 0 259.3	GND CON 121.9 259.3	CLNC DEL 121.9 126.05 (when tower closed)	UNICOM 122.95
---------------	-----------------------------------	---	------------------------	---	------------------



ELEV 1847	<b>D</b>	TDZE 1844
-----------	----------	-----------



				
CATEGORY	A	B	C	D
S-31	2200-1 356 (400-1)			2200-1¼ 356 (400-1¼)
CIRCLING	2300-1	453 (500-1)	2300-1½ 453 (500-1½)	2400-2 553 (600-2)