

WAAS CH <b>65710</b> <b>W35A</b>	APP CRS <b>352°</b>	Rwy Idg <b>7851</b> TDZE <b>1883</b> Apt Elev <b>1887</b>
--	------------------------	---

RNAV (GPS) RWY 35

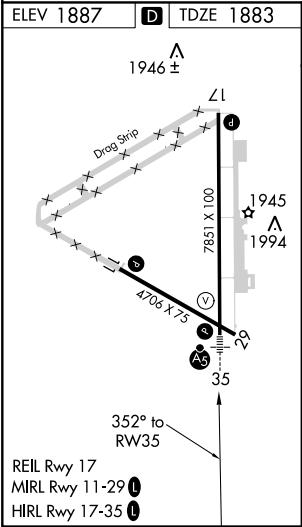
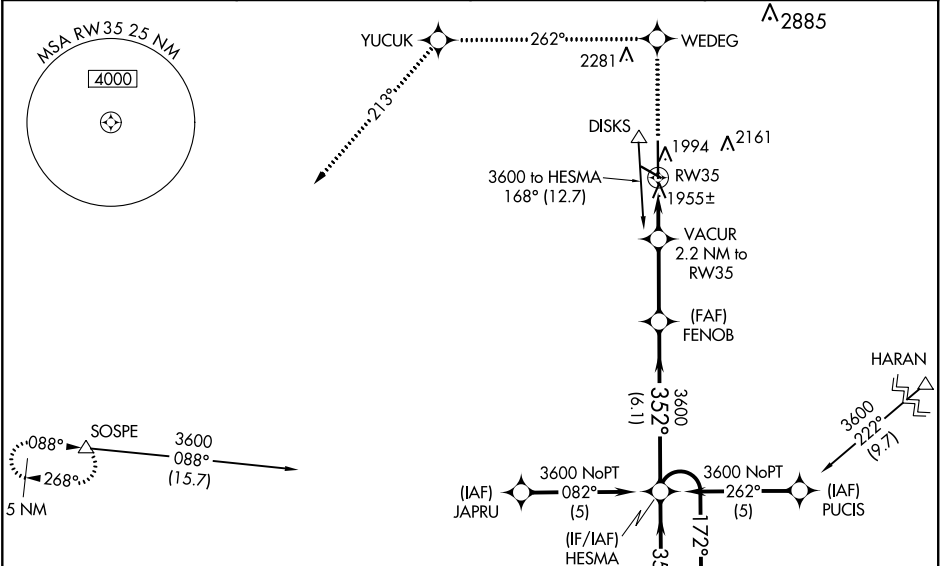
GREAT BEND MUNI (GBD)

**⚠** For uncompensated Baro-VNAV systems, LNAV/VNAV NA below -18°C (0°F) or above 54°C (130°F). DME/DME RNP-0.3 NA. When local altimeter setting not received, use Russell Muni altimeter setting and increase all DA 77 feet and all MDA 80 feet. Increase LPV and LNAV/VNAV all Cats, LNAV Cat C and Circling Cat D visibility ¼ mile. For inoperative MALSR increase LPV all Cats visibility to 1 mile. For inoperative MALSR when using Russell Muni altimeter setting increase LPV all Cats and LNAV Cat D visibility to 1¼ mile. Baro-VNAV and VDP NA when using Russell Muni altimeter setting. Inoperative table does not apply to LNAV Cat D.

MALSR

MISSED APPROACH: Climb to 4500 direct WEDEG and via 262° track to YUCUK then via 213° track to SOSPE and hold.

AWOS-3PT <b>119.275</b>	KANSAS CITY CENTER <b>118.8 322.425</b>	UNICOM <b>122.8 (CTAF) 1</b>
----------------------------	--	---------------------------------



4500	WEDEG	262° tr	YUCUK	213° tr	SOSPE	
*LNAV only						
VACUR		FENOB				
2.2 NM to RW35		HESMA				
*0.9 NM to RW35		4 NM Holding Pattern				
RW35		3600				
2620*		352°				
0.9		172°→				
1.3 NM		←352°				
3 NM		3600				
6.1 NM		GP 3.00°				
		TCH 49				
CATEGORY	A		B		C	D
LPV DA	2171 - ½		288 (300-½)			
LNAV/VNAV DA	2222 - ¾		339 (400-¾)			
LNAV MDA	2220-½		337 (400-½)		2220-1 337 (400-1)	
CIRCLING	2300-1		2340-1		2500-2	
	413 (500-1)		453 (500-1)		613 (700-2)	