

HI-VOR/DME or TACAN RWY 36

VORTAC LNK 116.1 Chan 108	APCH CRS 360°	Rwy ldg 12,901 TDZE 1175 Arprt Elev 1219	JAL-232 [USAF]	LINCOLN (KLNK)
---	-------------------------	---	----------------	----------------

▼ * When ALS inop, increase CAT E vis to 1½ miles.
 ** When ALS inop, increase CAT CDE vis to 1½ miles.

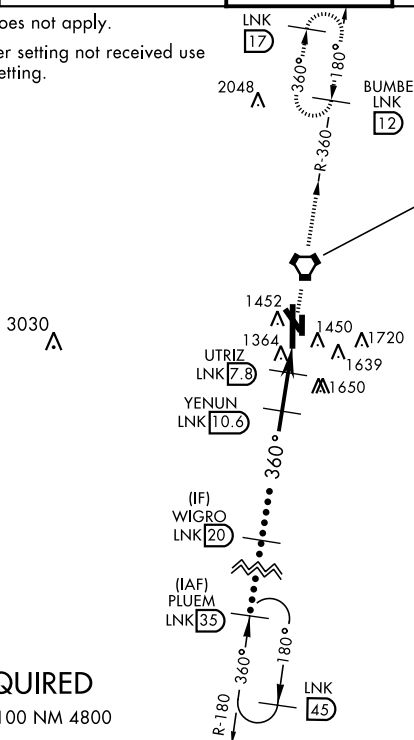


MISSED APPROACH: Climb to 3000 direct LNK VORTAC then via LNK R-360 to BUMBE 12 DME and hold.

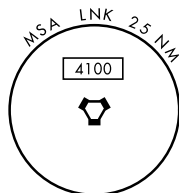
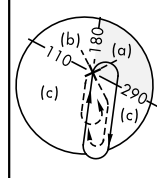
ATIS 118.05 290.9	OMAHA APP CON 124.0 270.3	LINCOLN TOWER ★ 118.5 253.5	GND CON 121.9 275.8	CLNC DEL 120.7 225.4
-----------------------------	-------------------------------------	---------------------------------------	-------------------------------	--------------------------------

Inoperative table does not apply.

When local altimeter setting not received use Beatrice altimeter setting.

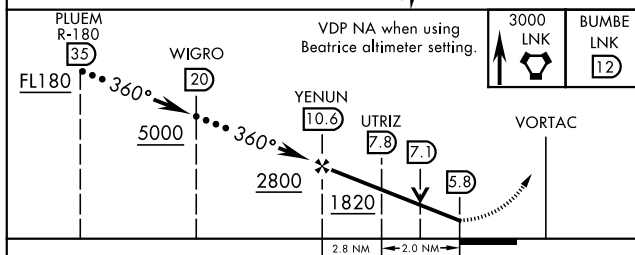


LINCOLN
116.1 LNK
Chan 108

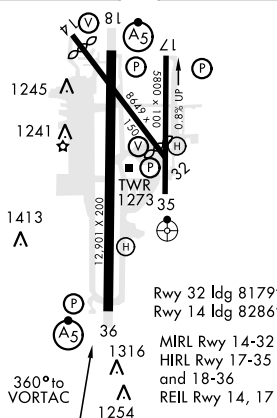


RADAR REQUIRED

EMERG SAFE ALT 100 NM 4800



ELEV 1219 TDZE 1175



CATEGORY	C	D	E
S-36 *	1620-7½	445	(500-7½)
CIRCLING	1760-1½ 541 (600-1½)	1820-2 601 (700-2)	2040-3 821 (900-3)
BEATRICE ALTIMETER SETTING			
S-36 **	1720-1½	545	(600-1½)
CIRCLING	1860-1½ 641 (700-1½)	1920-2¼ 701 (800-2¼)	2140-3¼ 921 (1000-3¼)

HI-VOR/DME or TACAN RWY 36