

LOC I-OCZ	APP CRS	Rwy Idg	12901
111.1	177°	TDZE	1195
		Apt Elev	1219

ILS or LOC RWY 18

LINCOLN (LNK)

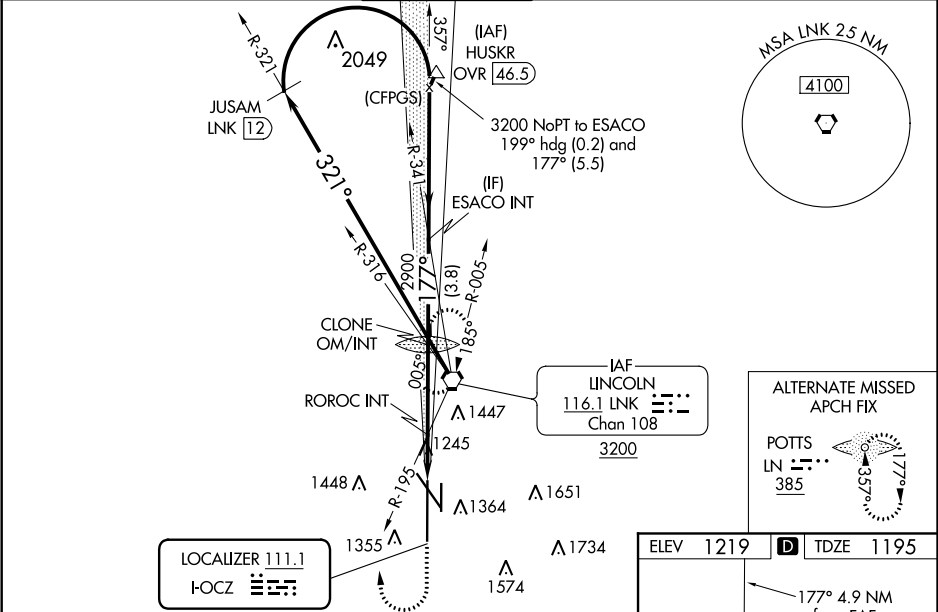
When local altimeter setting not received use Beatrice altimeter setting and increase all DA 91 feet and all MDA 100 feet, increase S-LOC 18 Cat C/D/E visibility to 1½, Circling Cat C visibility to 2 and Cat D visibility to 2¼; increase ROROC fix minimums S-LOC 18 Cat C/D/E visibility to 1¾, Circling Cat C visibility to 1¾ and Cat D visibility to 2¼. For inop MALSR, increase S-ILS 18 Cat E visibility to RVR 4000, S-LOC 18 Cat E visibility to 1¾, and ROROC fix minimums S-LOC 18 Cat E visibility to 1½. For inop MALSR when using Beatrice altimeter setting, increase S-ILS 18 all Cats visibility to RVR 4500, S-LOC 18 Cat E visibility to 2, and ROROC fix minimums S-LOC 18 Cat C visibility to 1¾. Cat D and E Straight-in minimums NA when using Beatrice altimeter setting. #RVR 1800 authorized with use of FD or AP or HUD to DA.

MALSR

AS

MISSED APPROACH: Climb to 1700 then climbing right turn to 3000 direct LNK VORTAC and hold.

ATIS	OMAHA APP CON	LINCOLN TOWER★	GND CON	CLNC DEL	UNICOM
118.05 290.9	124.0 270.3	118.5(CTAF) 253.5	121.9 275.8	120.7 225.4	122.95



1700

3000

LNK

*1880 when using Beatrice altimeter setting.

*LOC only.

LNK VORTAC

3200

CLONE OM/INT

2837

ROROC INT

1780*

321°

ESACO INT

3200

177°

3200

2900

GS 3.00°

TCH 55

1.7 NM

3.2 NM

3.8 NM

JUSAM LNK (12)

Teardrop Right Turn

CATEGORY	A	B	C	D	E
S-ILS 18#	1395/24 200 (200-½)				
S-LOC 18	1780/24	585 (600-½)	1780-1¼		585 (600-1¼)
CIRCLING	1780-1	561 (600-1)	1780-1¾ 561 (600-1¾)	1820-2 601 (700-2)	2040-3 821 (900-3)
ROROC FIX MINIMUMS (DUAL VOR RECEIVERS REQUIRED)					
S-LOC 18	1720-24	525 (600-½)	1720/55 525 (600-1)		
CIRCLING	1720-1 501 (600-1)	1760-1 541 (600-1)	1760-1½ 541 (600-1½)	1820-2 601 (700-2)	2040-3 821 (900-3)

