

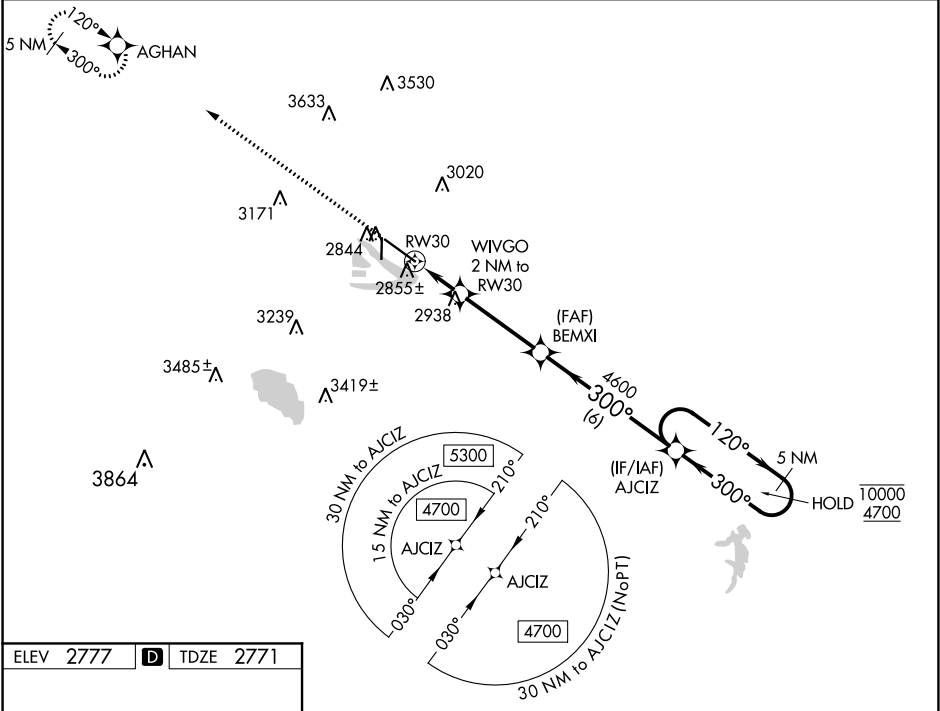
WAAS CH 60915 W30A	APP CRS 300°	Rwy Idg TDZE 2771 Apt Elev 2777
--	------------------------	---

RNAV (GPS) RWY 30

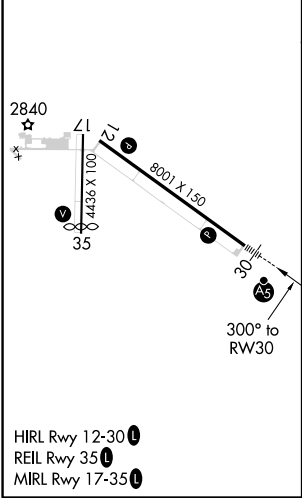
NORTH PLATTE RGNL AIRPORT LEE BIRD FIELD (LBF)

RNP APCH For uncompensated Baro-VNAV systems, LNAV/VNAV NA below -23°C or above 52°C.	MALSR 	MISSED APPROACH: Climb to 4900 direct AGHAN and hold.
--	-----------	---

ASOS 118.425	DENVER CENTER 132.7 226.675	CLNC DEL 132.7	UNICOM 123.0 (CTAF)
------------------------	---------------------------------------	--------------------------	-------------------------------



ELEV 2777	D	TDZE 2771
------------------	----------	------------------



4900	AGHAN	WIVGO 2 NM to RW30	BEMXI 4600	AJCIZ	5 NM Holding Pattern
*LNAV only	*0.9 NM to RW30	3460*	4600	120° 10000	300° 4700
0.9	1.1	3.6	6	GP 3.00°	TCH 55
CATEGORY	A	B	C	D	
LPV DA	2971-½	200 (200-½)			
LNAV/VNAV DA	3021-½	250 (300-½)			
LNAV MDA	3120-½	349 (400-½)	3120-⅝	349 (400-⅝)	
CIRCLING	3280-1 503 (600-1)	3320-1 543 (600-1)	3420-1¾ 643 (700-1¾)	3560-2½ 783 (800-2½)	

NC-2, 31 DEC 2020 to 28 JAN 2021

NC-2, 31 DEC 2020 to 28 JAN 2021