

WAAS CH 81807 W36A	APP CRS 356°	Rwy Idg 7339 TDZE 1066 Apt Elev 1087
--	------------------------	---

RNAV (GPS) RWY 36

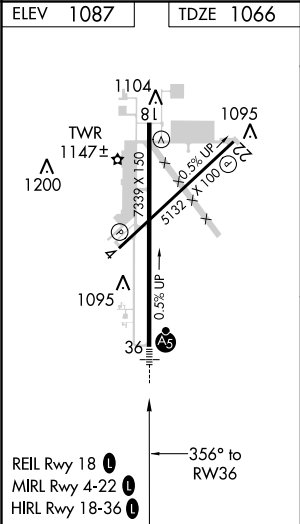
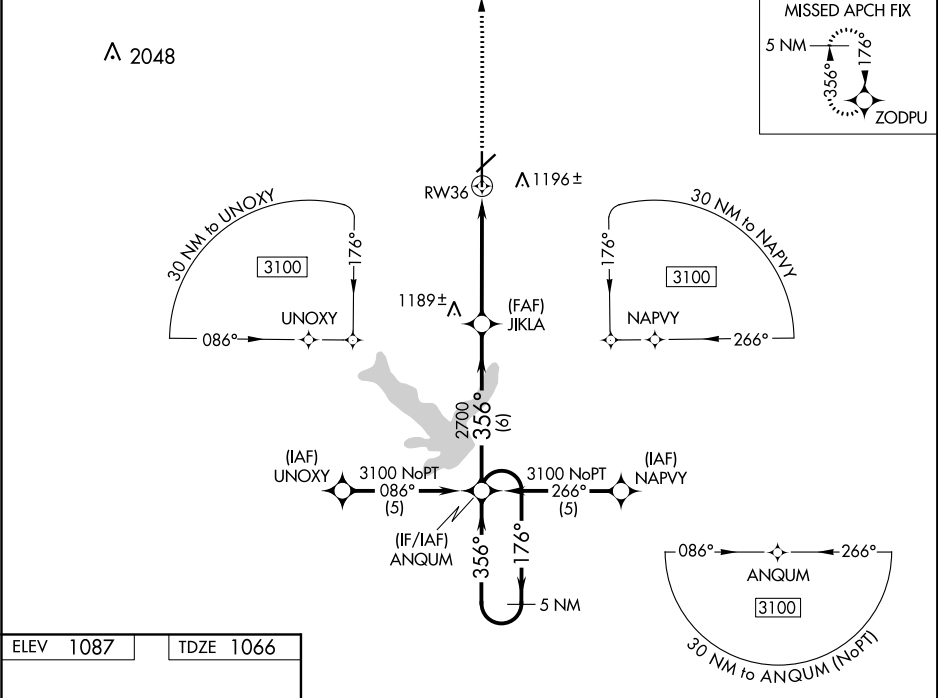
NEW CENTURY AIRCENTER (IXD)

⚠ DME/DME RNP-0.3 NA. For inoperative MALSR, increase LNAV Cat D visibility to 1 ¼ and LPV visibility to 1 all Cats. If local altimeter setting not received, use Johnson County Executive altimeter setting and increase all DA/MDAs 20 feet. VDP NA with Johnson County Executive altimeter setting.

MALSR

MISSED APPROACH: Climb to 3100 direct ZODPU and hold.

ASOS 135.325	KANSAS CITY APP CON 118.9 251.075	NEW CENTURY TOWER ★ 133.0 (CTAF) 0	GND CON 124.3	UNICOM 122.95
------------------------	---	--	-------------------------	-------------------------



5 NM Holding Pattern				3100	ZODPU
GP 3.00° TCH 50				*INAV only.	
ANQUM				*1.1 NM to RW36	
JIKLA				RW36	
6 NM				1.1 NM	
3.9 NM					
CATEGORY	A	B	C	D	
LPV DA	1316-½ 250 (300-½)				
LNAV/VNAV DA	NA				
LNAV MDA	1440-½ 374 (400-½)			1440-1 374 (400-1)	
CIRCLING	1560-1 473 (500-1)		1580-1½ 493 (500-1½)		1640-2 553 (600-2)

NC-2, 31 DEC 2020 to 28 JAN 2021

NC-2, 31 DEC 2020 to 28 JAN 2021